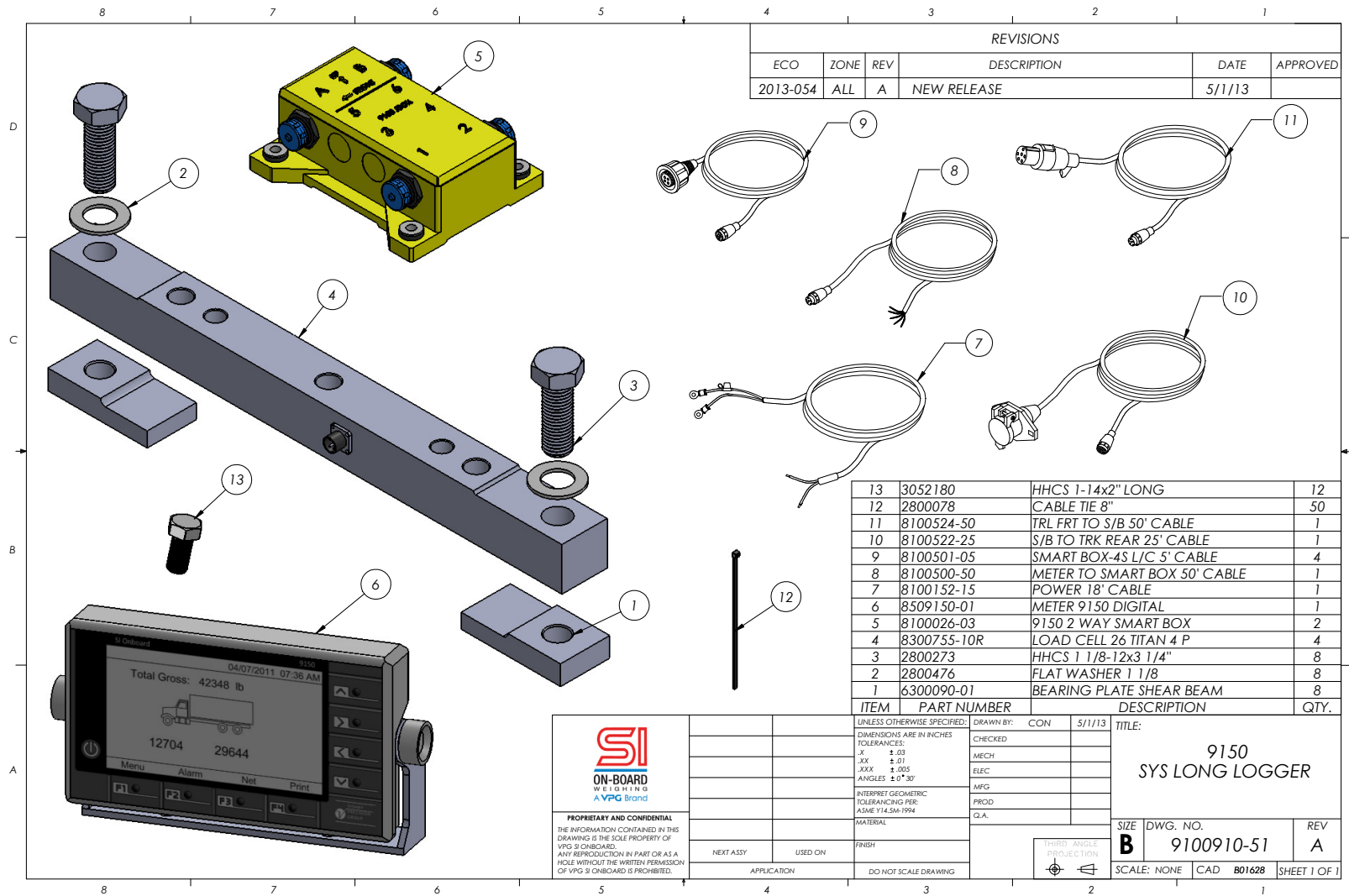


9150 Long Logger System - 9100910-51



REVISIONS					
ECO	ZONE	REV	DESCRIPTION	DATE	APPROVED
2013-054	ALL	A	NEW RELEASE	5/1/13	

13	3052180	HHCS 1-14x2" LONG	12
12	2800078	CABLE TIE 8"	50
11	8100524-50	TRL FRT TO S/B 50' CABLE	1
10	8100522-25	S/B TO TRK REAR 25' CABLE	1
9	8100501-05	SMART BOX-4S L/C 5' CABLE	4
8	8100500-50	METER TO SMART BOX 50' CABLE	1
7	8100152-15	POWER 18' CABLE	1
6	8509150-01	METER 9150 DIGITAL	1
5	8100026-03	9150 2 WAY SMART BOX	2
4	8300755-10R	LOAD CELL 26 TITAN 4 P	4
3	2800273	HHCS 1 1/8-12x3 1/4"	8
2	2800476	FLAT WASHER 1 1/8	8
1	6300090-01	BEARING PLATE SHEAR BEAM	8

PROPRIETARY AND CONFIDENTIAL
THE INFORMATION CONTAINED IN THIS DRAWING IS THE SOLE PROPERTY OF VPG'S ONBOARD. ANY REPRODUCTION IN PART OR AS A WHOLE WITHOUT THE WRITTEN PERMISSION OF VPG'S ONBOARD IS PROHIBITED.

UNLESS OTHERWISE SPECIFIED:	DRAWN BY:	CON	5/1/13	TITLE:
DIMENSIONS ARE IN INCHES	CHECKED:			9150 SYS LONG LOGGER
TOLERANCES:	MECH			
.X ±.03	ELEC			
.XX ±.01	MFG			
.XXX ±.005	PROD			
ANGLES ±.5°	Q.A.			
INTERPRET GEOMETRIC TOLERANCING PER: ASME Y14.5M-1994				SIZE
MATERIAL				DWG. NO.
FINISH				9100910-51
				REV
				A

THIRD ANGLE PROJECTION

SCALE: NONE CAD B01628 SHEET 1 OF 1

5920 South 194th Street | Kent, WA 98032 | USA
 Sales Support: 800-638-5111 | Technical Support: 626-202-5047
 E-mail: Obw.usa@vpgsensors.com

sionboard.com

