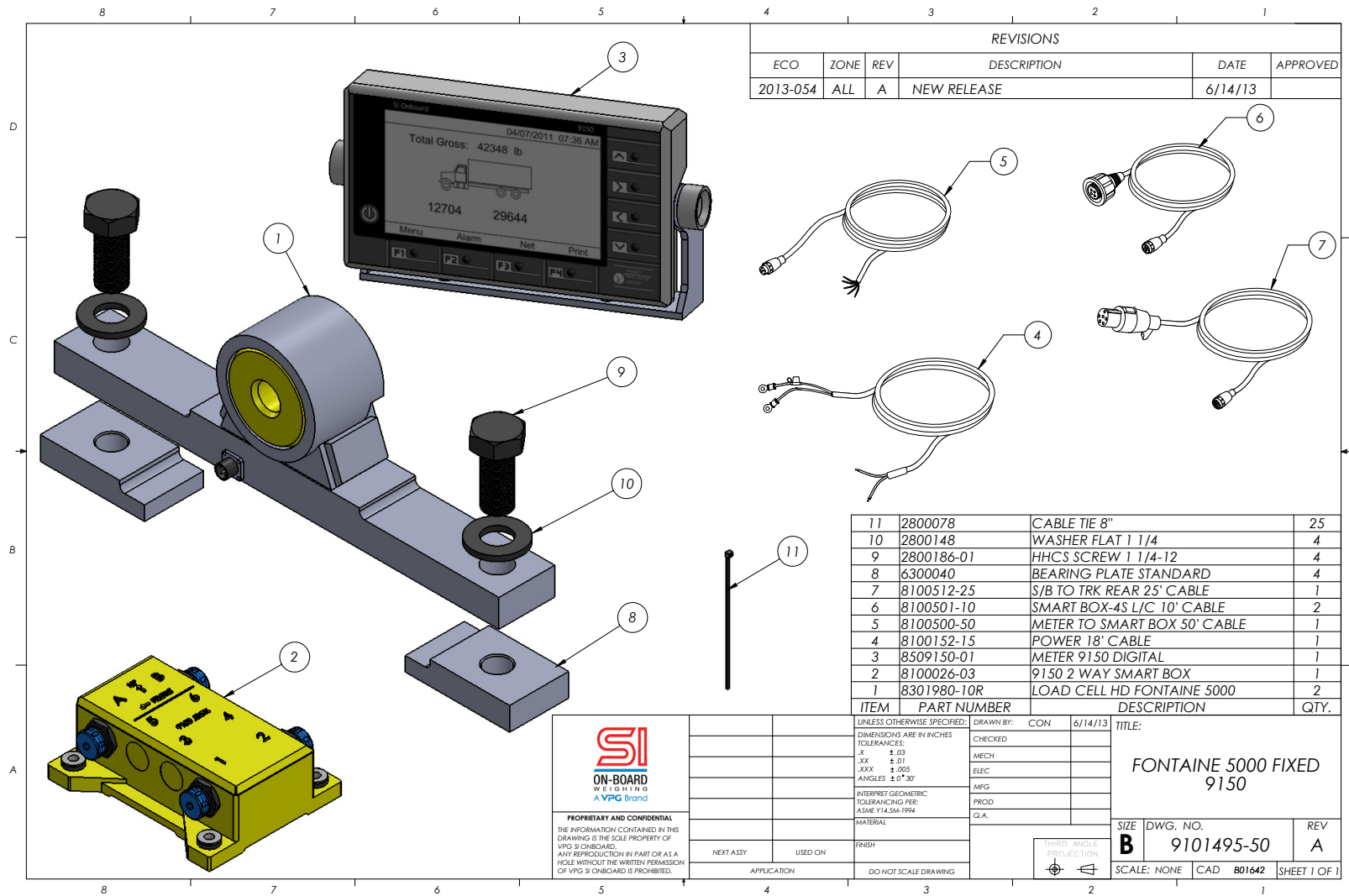


# 9150 Fontaine 5000 Fixed 5th Wheel System- 9101495-50



**SI**  
ON-BOARD  
WEIGHING  
A VPG Brand

**PROPRIETARY AND CONFIDENTIAL**  
THE INFORMATION CONTAINED IN THIS DRAWING IS THE SOLE PROPERTY OF VPG'S ONBOARD. ANY REPRODUCTION IN PART OR AS A WHOLE WITHOUT THE WRITTEN PERMISSION OF VPG'S ONBOARD IS PROHIBITED.

UNLESS OTHERWISE SPECIFIED: DRAWN BY: CON 6/14/13  
DIMENSIONS ARE IN INCHES  
TOLERANCES:  
X ±.03  
.XX ±.01  
.XXX ±.005  
ANGLES ±.5°/3X  
INTERPRET GEOMETRIC TOLERANCING PER: ASME Y14.5M-1994

CHECKED:  
MECH  
ELEC  
MFG  
PROD  
Q.A.

MATERIAL:  
FINISH:  
APPLICATION:  
NEXT ASSY:  
USED ON:

DO NOT SCALE DRAWING

THIRD ANGLE PROJECTION

TITLE:  
**FONTAINE 5000 FIXED 9150**

SIZE: **B** DWG. NO. **9101495-50** REV **A**

5920 South 194th Street | Kent, WA 98032 | USA  
 Sales Support: 800-638-5111 | Technical Support: 626-202-5047  
 E-mail: [Obw.usa@vpgsensors.com](mailto:Obw.usa@vpgsensors.com)

[sionboard.com](http://sionboard.com)

