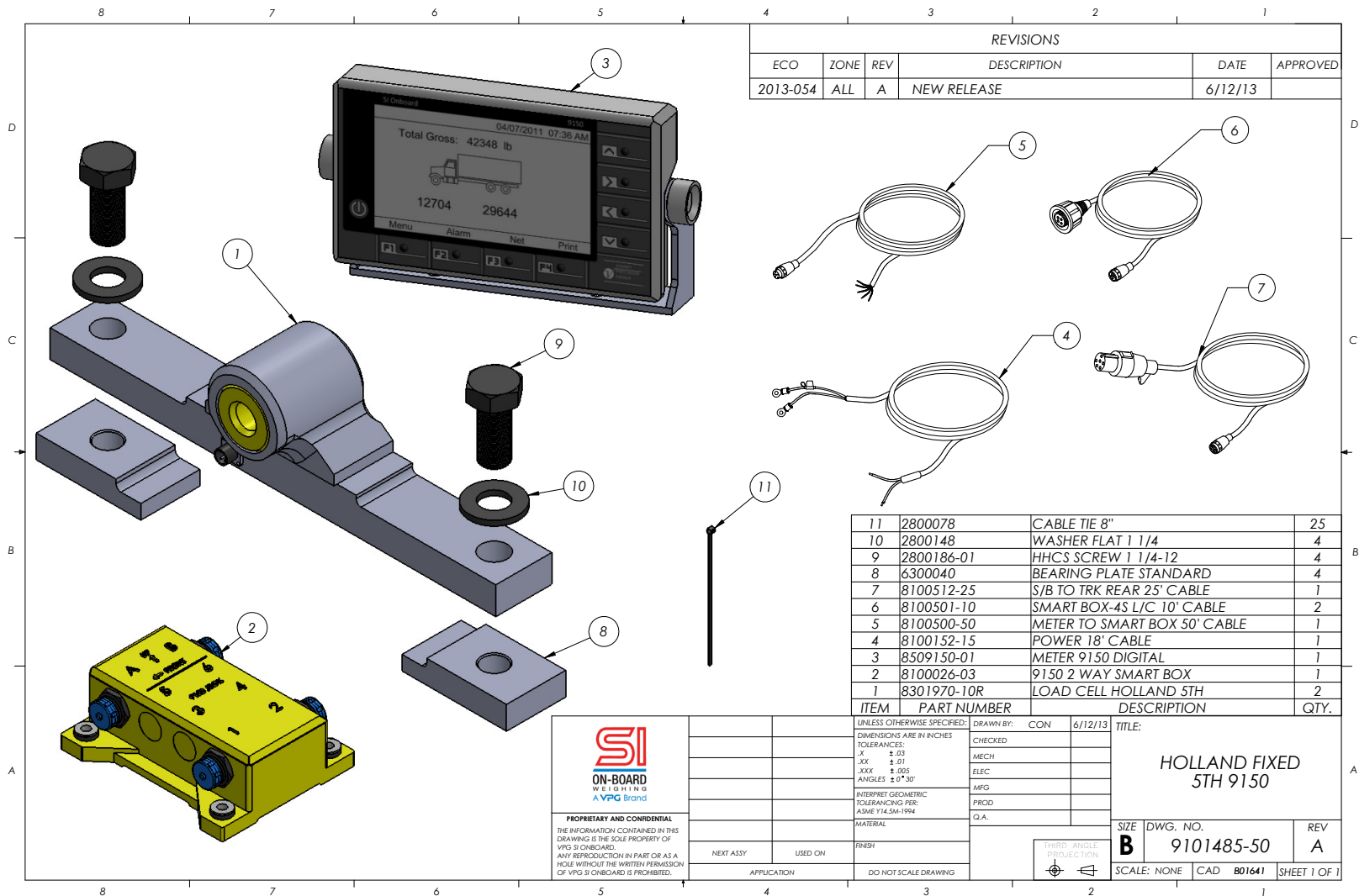


Holland Fixed 9150 System - 9101485-50

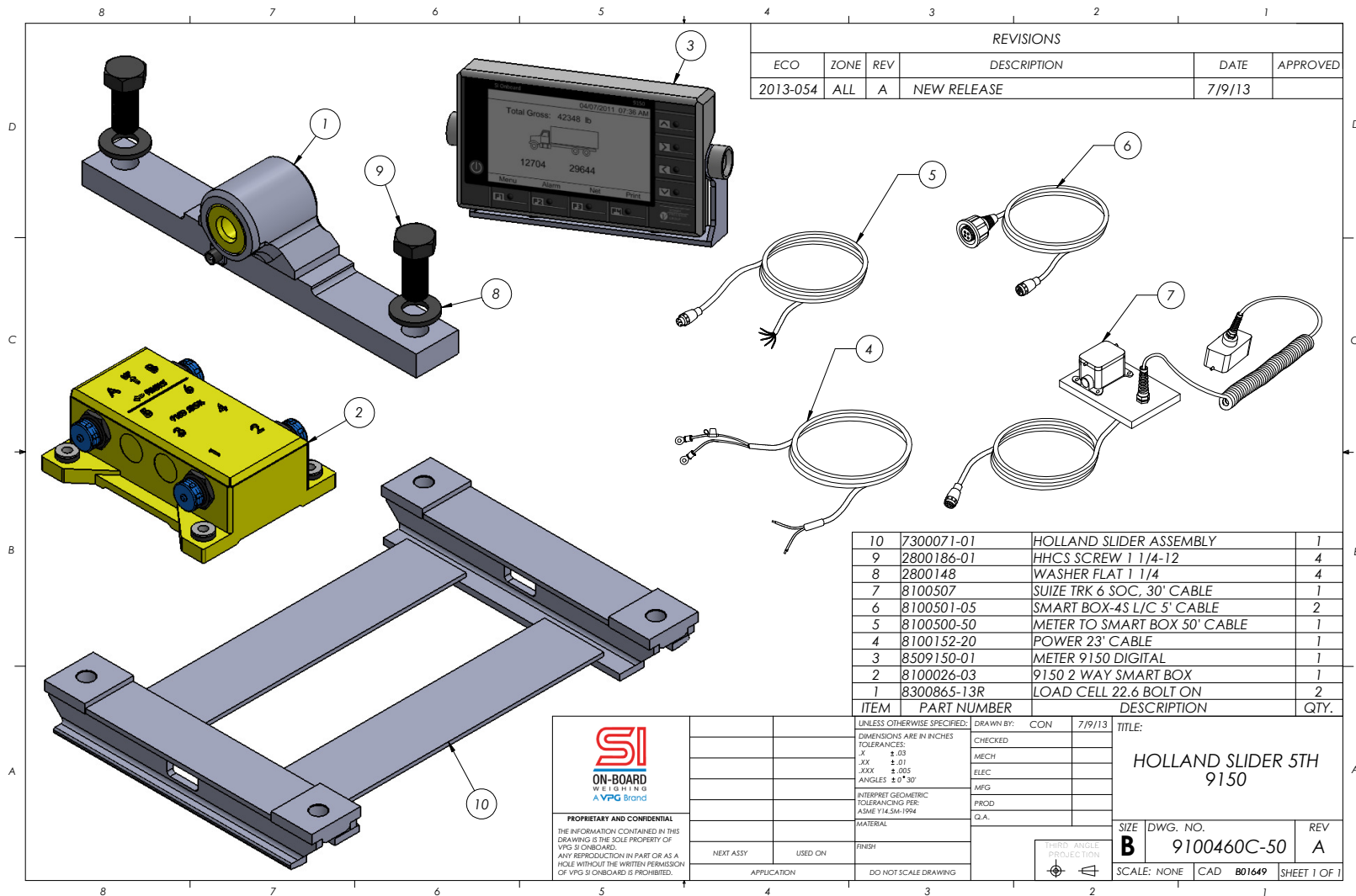


5920 South 194th Street | Kent, WA 98032 | USA
 Sales Support: 800-638-5111 | Technical Support: 626-202-5047
 E-mail: Obw.usa@vpgsensors.com

sionboard.com



Holland Fixed 9150 System - 9100460C-50

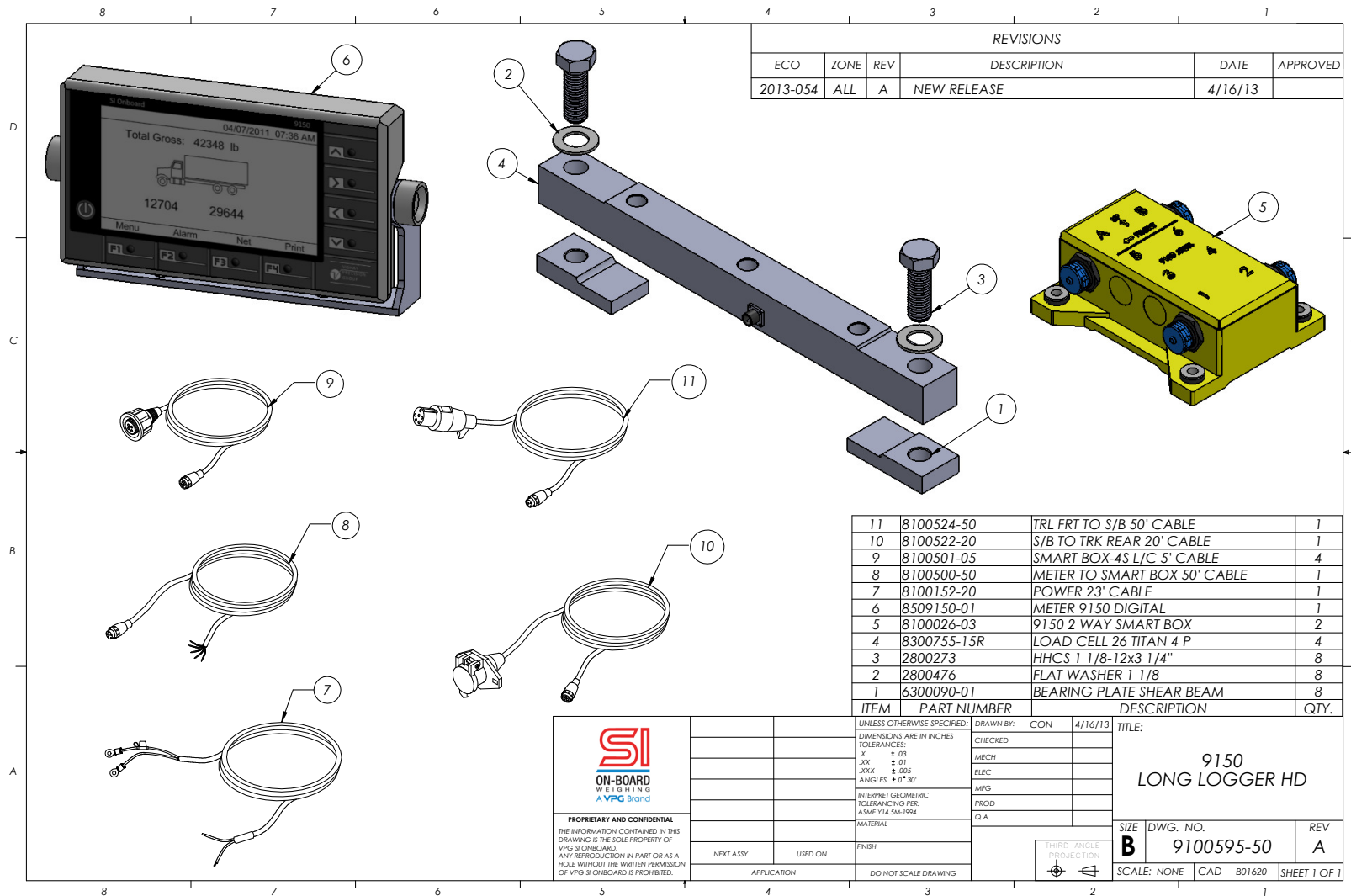


5920 South 194th Street | Kent, WA 98032 | USA
 Sales Support: 800-638-5111 | Technical Support: 626-202-5047
 E-mail: Obw.usa@vpgsensors.com

sionboard.com



9150 Long Logger System - 9100595-50

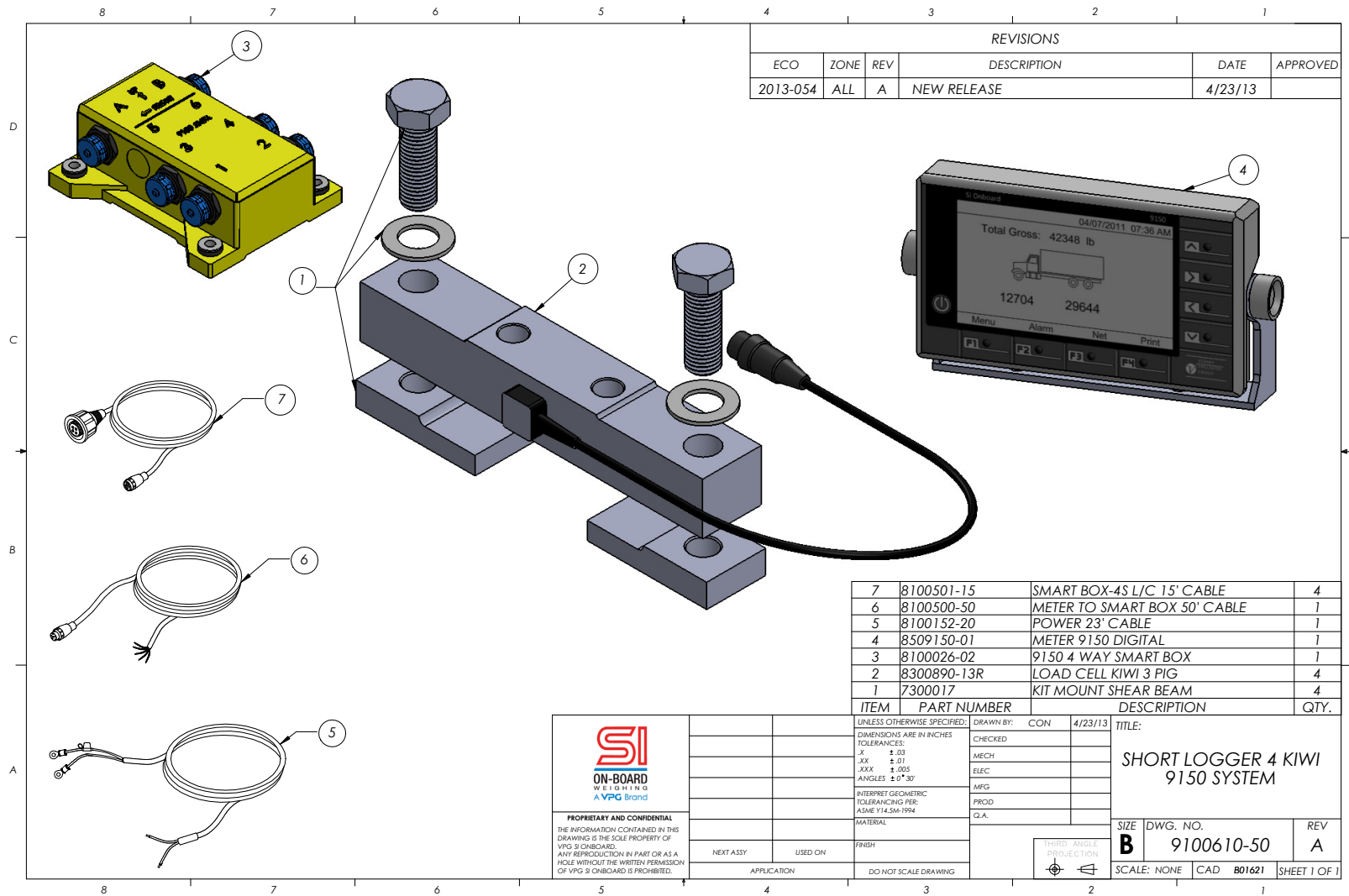


5920 South 194th Street | Kent, WA 98032 | USA
 Sales Support: 800-638-5111 | Technical Support: 626-202-5047
 E-mail: Obw.usa@vpgsensors.com

sionboard.com



9150 Short Logger System - 9100610-50



REVISIONS					
ECO	ZONE	REV	DESCRIPTION	DATE	APPROVED
2013-054	ALL	A	NEW RELEASE	4/23/13	

ITEM	PART NUMBER	DESCRIPTION	QTY.
7	8100501-15	SMART BOX-4S L/C 15' CABLE	4
6	8100500-50	METER TO SMART BOX 50' CABLE	1
5	8100152-20	POWER 23' CABLE	1
4	8509150-01	METER 9150 DIGITAL	1
3	8100026-02	9150 4 WAY SMART BOX	1
2	8300890-13R	LOAD CELL KIWI 3 PIG	4
1	7300017	KIT MOUNT SHEAR BEAM	4

SI
ON-BOARD
WEIGHING
A VPG Brand

UNLESS OTHERWISE SPECIFIED: DRAWN BY: CON 4/23/13

DIMENSIONS ARE IN INCHES

TOLERANCES:

.X ±.03

.XX ±.01

.XXX ±.005

ANGLES ±0°30'

INTERPRET GEOMETRIC TOLERANCING PER: ASME Y14.5M-1994

MATERIAL

FINISH

DO NOT SCALE DRAWING

TITLE:

**SHORT LOGGER 4 KIWI
9150 SYSTEM**

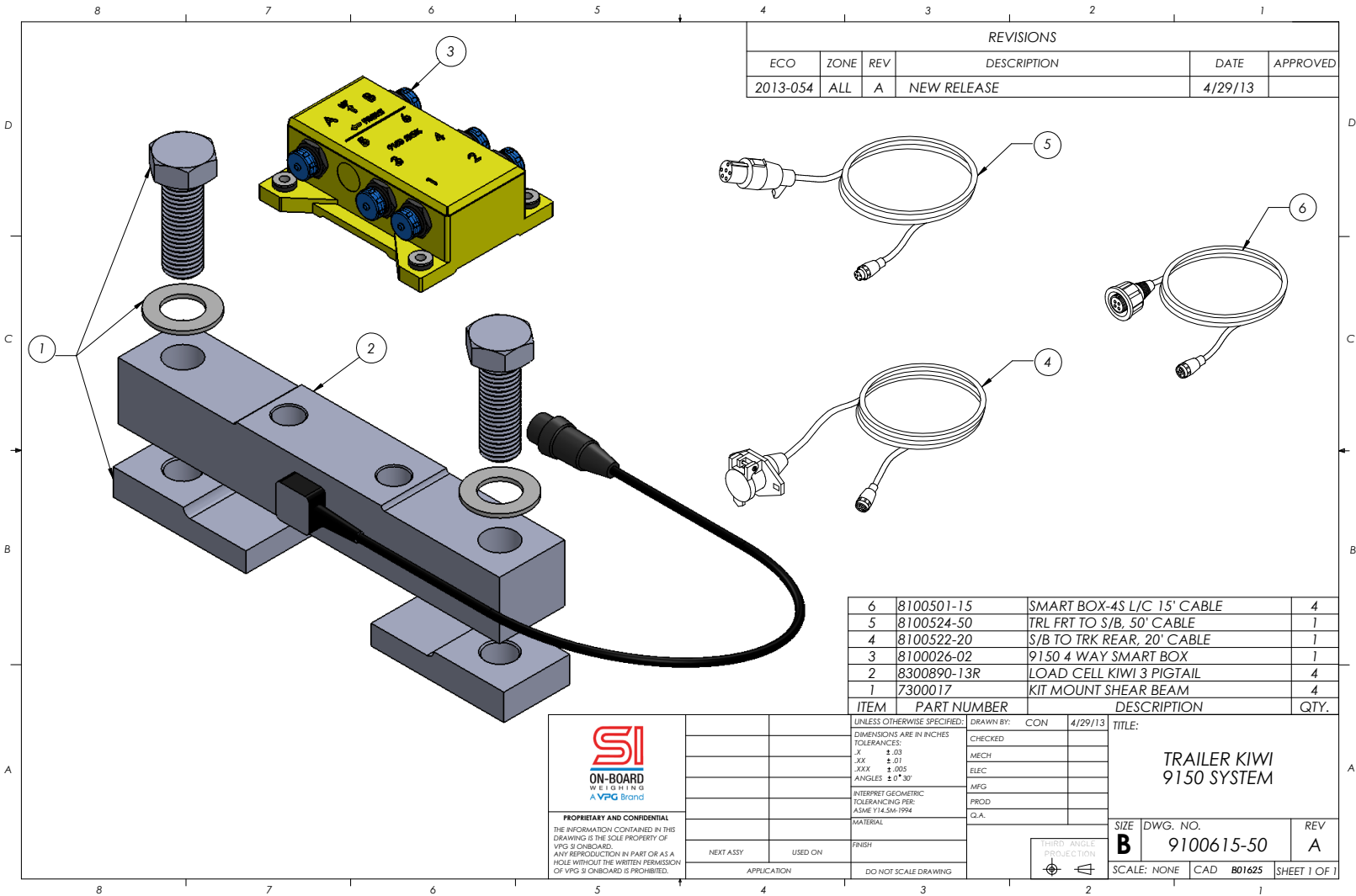
SIZE	DWG. NO.	REV
B	9100610-50	A
SCALE: NONE	CAD B01621	SHEET 1 OF 1

5920 South 194th Street | Kent, WA 98032 | USA
 Sales Support: 800-638-5111 | Technical Support: 626-202-5047
 E-mail: Obw.usa@vpgsensors.com

sionboard.com



9150 Trailer KIWI System - 9100615-50



REVISIONS					
ECO	ZONE	REV	DESCRIPTION	DATE	APPROVED
2013-054	ALL	A	NEW RELEASE	4/29/13	

ITEM	PART NUMBER	DESCRIPTION	QTY.
6	8100501-15	SMART BOX-4S L/C 15' CABLE	4
5	8100524-50	TRL FRT TO S/B, 50' CABLE	1
4	8100522-20	S/B TO TRK REAR, 20' CABLE	1
3	8100026-02	9150 4 WAY SMART BOX	1
2	8300890-13R	LOAD CELL KIWI 3 PIGTAIL	4
1	7300017	KIT MOUNT SHEAR BEAM	4

PROPRIETARY AND CONFIDENTIAL
THE INFORMATION CONTAINED IN THIS DRAWING IS THE SOLE PROPERTY OF VPG'S ONBOARD. ANY REPRODUCTION IN PART OR AS A WHOLE WITHOUT THE WRITTEN PERMISSION OF VPG'S ONBOARD IS PROHIBITED.

LINLESS OTHERWISE SPECIFIED:	DRAWN BY:	CON	4/29/13
DIMENSIONS ARE IN INCHES	CHECKED:		
TOLERANCES:	MECH		
.X ±.03	ELEC		
.XX ±.01	MFG		
.XXX ±.005	PROD		
ANGLES ±0°30'	Q.A.		
INTERPRET GEOMETRIC TOLERANCING PER: ASME Y14.5M-1994			
MATERIAL			
FINISH			
DO NOT SCALE DRAWING			

TITLE:
**TRAILER KIWI
9150 SYSTEM**

SIZE	DWG. NO.	REV
B	9100615-50	A

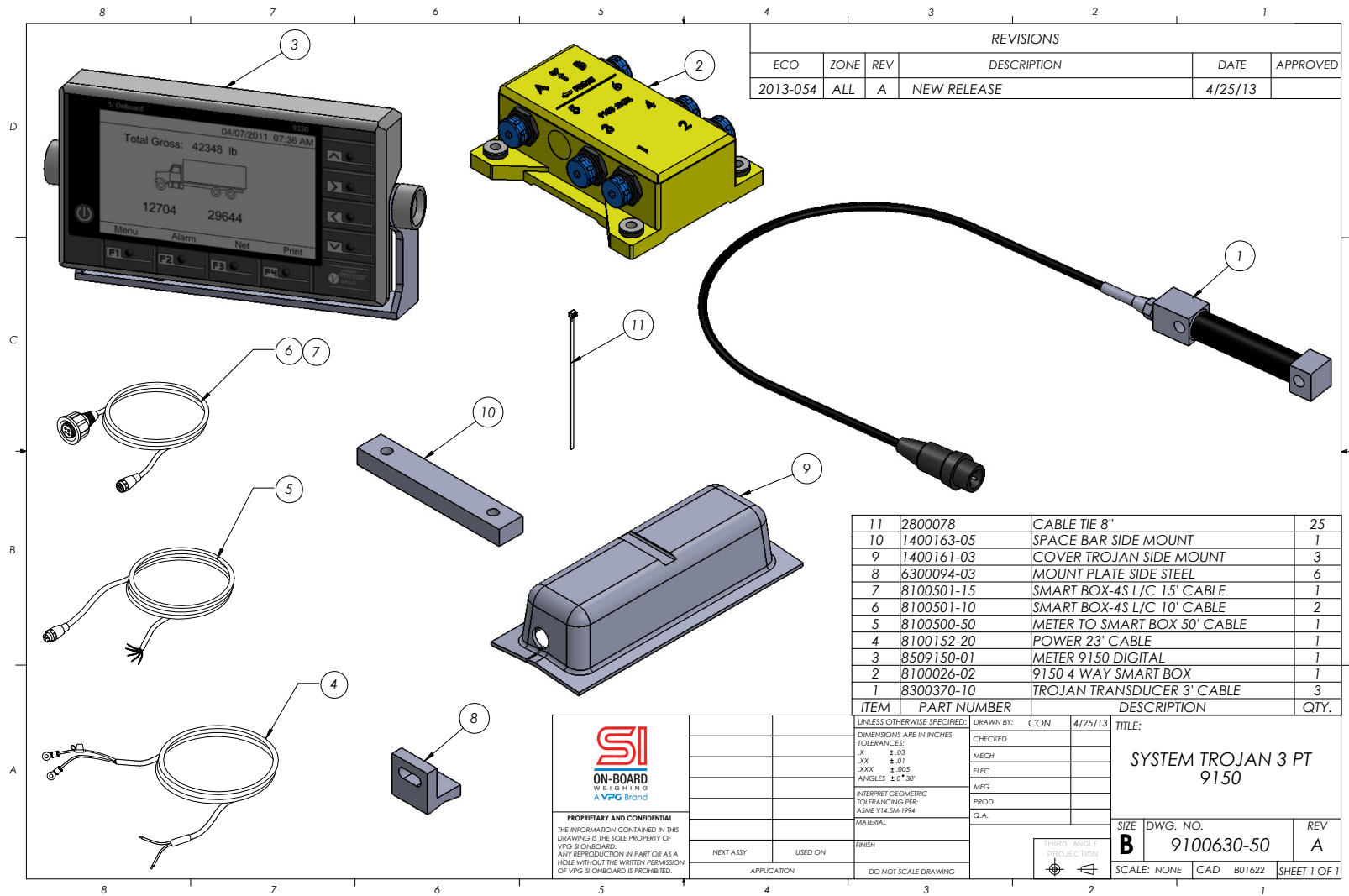
SCALE: NONE CAD B01625 SHEET 1 OF 1

5920 South 194th Street | Kent, WA 98032 | USA
 Sales Support: 800-638-5111 | Technical Support: 626-202-5047
 E-mail: Obw.usa@vpgsensors.com

sionboard.com



9150 Trojan 3 Point System - 9100630-50

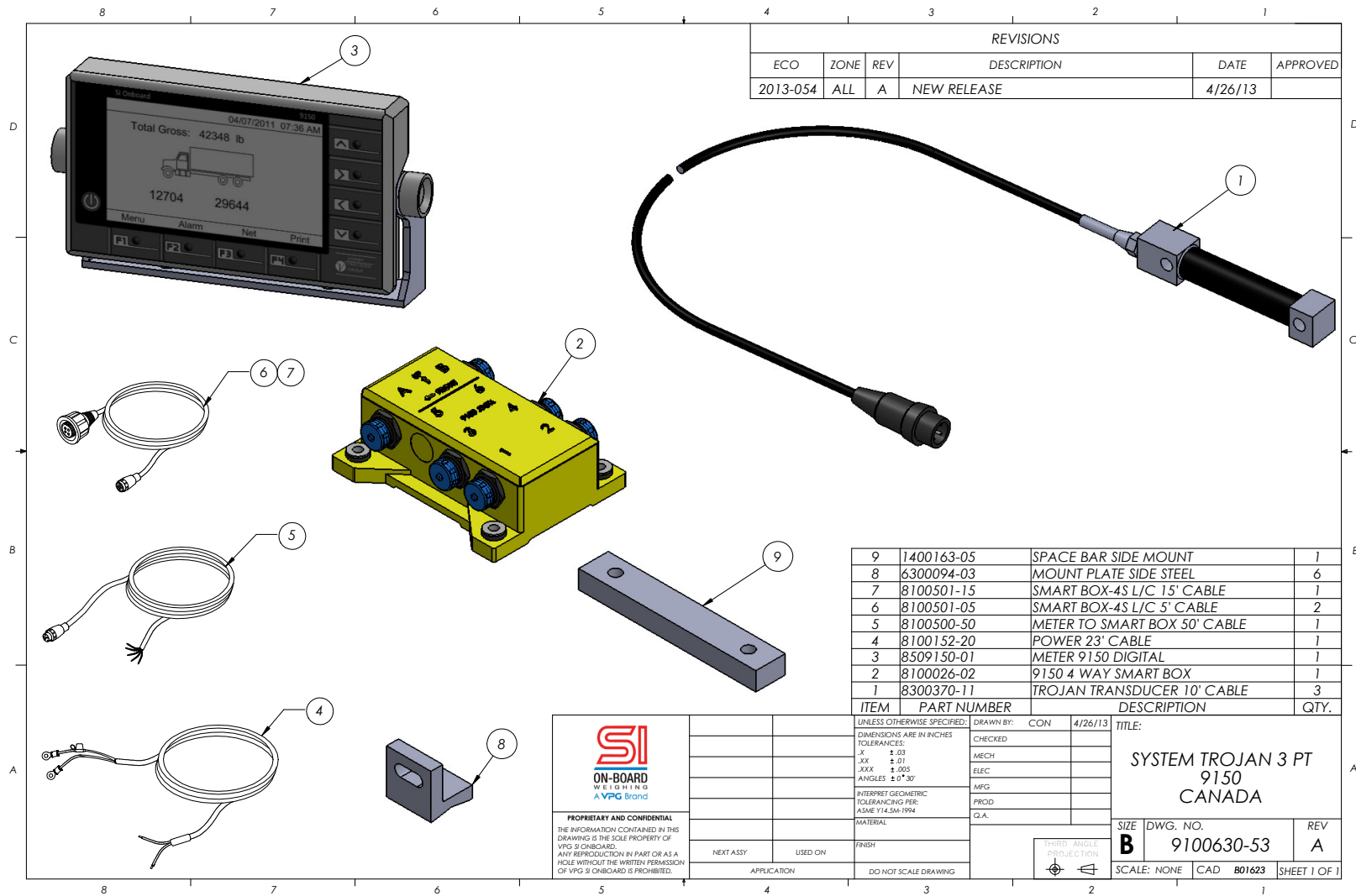


5920 South 194th Street | Kent, WA 98032 | USA
 Sales Support: 800-638-5111 | Technical Support: 626-202-5047
 E-mail: Obw.usa@vpgsensors.com

sionboard.com



9150 Canada Trojan 3 Point System - 9100630-53

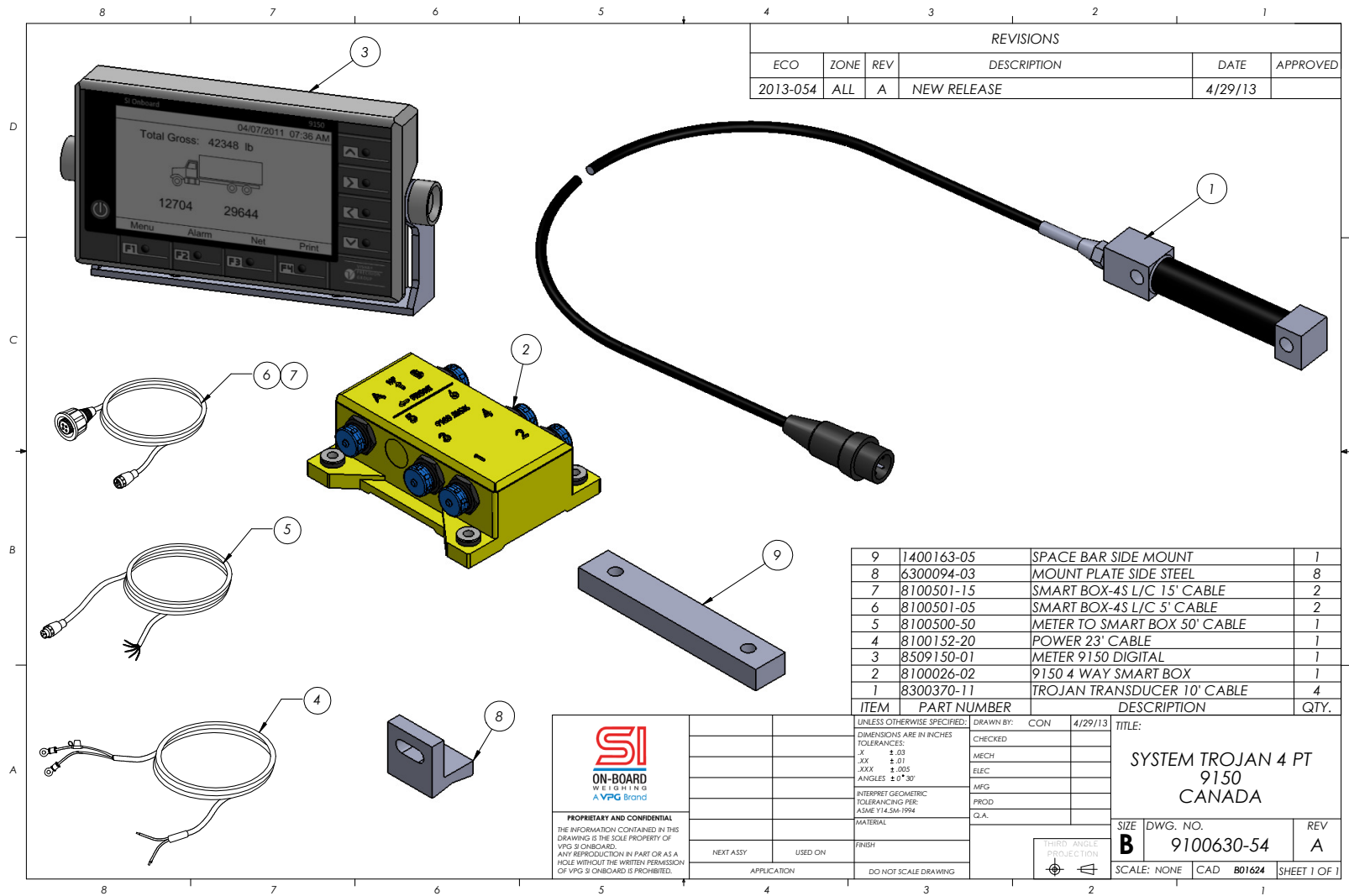


5920 South 194th Street | Kent, WA 98032 | USA
 Sales Support: 800-638-5111 | Technical Support: 626-202-5047
 E-mail: Obw.usa@vpgsensors.com

sionboard.com



9150 Canada Trojan 4 Point System - 9100630-54

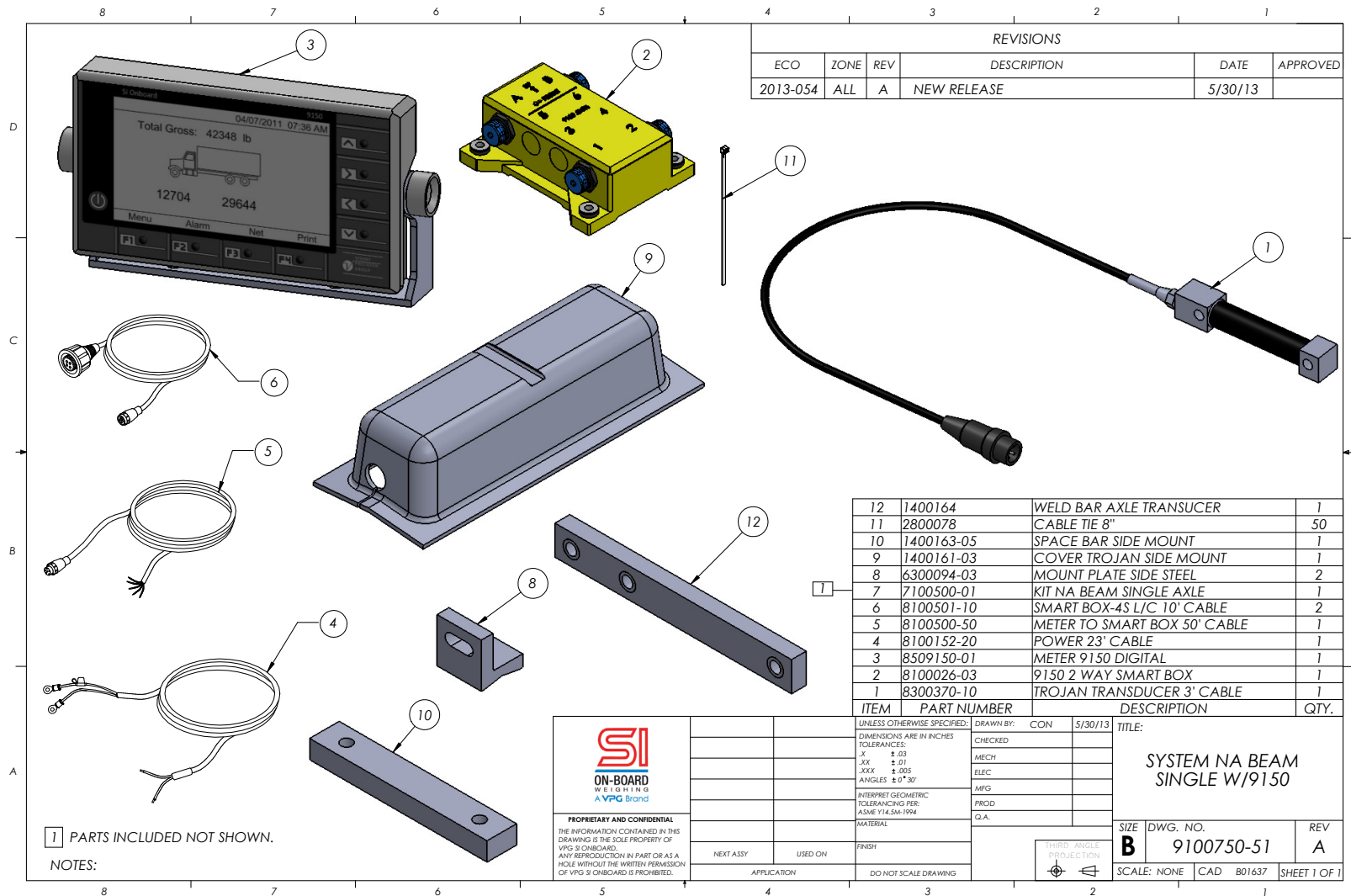


5920 South 194th Street | Kent, WA 98032 | USA
 Sales Support: 800-638-5111 | Technical Support: 626-202-5047
 E-mail: Obw.usa@vpgsensors.com

sionboard.com



9150 -NA Beam Single - 9100750-51



REVISIONS					
ECO	ZONE	REV	DESCRIPTION	DATE	APPROVED
2013-054	ALL	A	NEW RELEASE	5/30/13	

ITEM	PART NUMBER	DESCRIPTION	QTY.
12	1400164	WELD BAR AXLE TRANSDUCER	1
11	2800078	CABLE TIE 8"	50
10	1400163-05	SPACE BAR SIDE MOUNT	1
9	1400161-03	COVER TROJAN SIDE MOUNT	1
8	6300094-03	MOUNT PLATE SIDE STEEL	2
7	7100500-01	KIT NA BEAM SINGLE AXLE	1
6	8100501-10	SMART BOX-4S L/C 10' CABLE	2
5	8100500-50	METER TO SMART BOX 50' CABLE	1
4	8100152-20	POWER 23' CABLE	1
3	8509150-01	METER 9150 DIGITAL	1
2	8100026-03	9150 2 WAY SMART BOX	1
1	8300370-10	TROJAN TRANSDUCER 3' CABLE	1

SI
ON-BOARD
WEIGHING
A VPG Brand

UNLESS OTHERWISE SPECIFIED: DRAWN BY: CON 5/30/13 TITLE:

DIMENSIONS ARE IN INCHES CHECKED:

TOLERANCES:

.X ±.03

.XX ±.01

.XXX ±.005

ANGLES ±.0°/30'

INTERPRET GEOMETRIC TOLERANCING PER: ASME Y14.5M-1994

MATERIAL:

FINISH:

DO NOT SCALE DRAWING

SYSTEM NA BEAM SINGLE W/9150

SIZE: B DWG. NO. 9100750-51 REV. A

SCALE: NONE CAD B01637 SHEET 1 OF 1

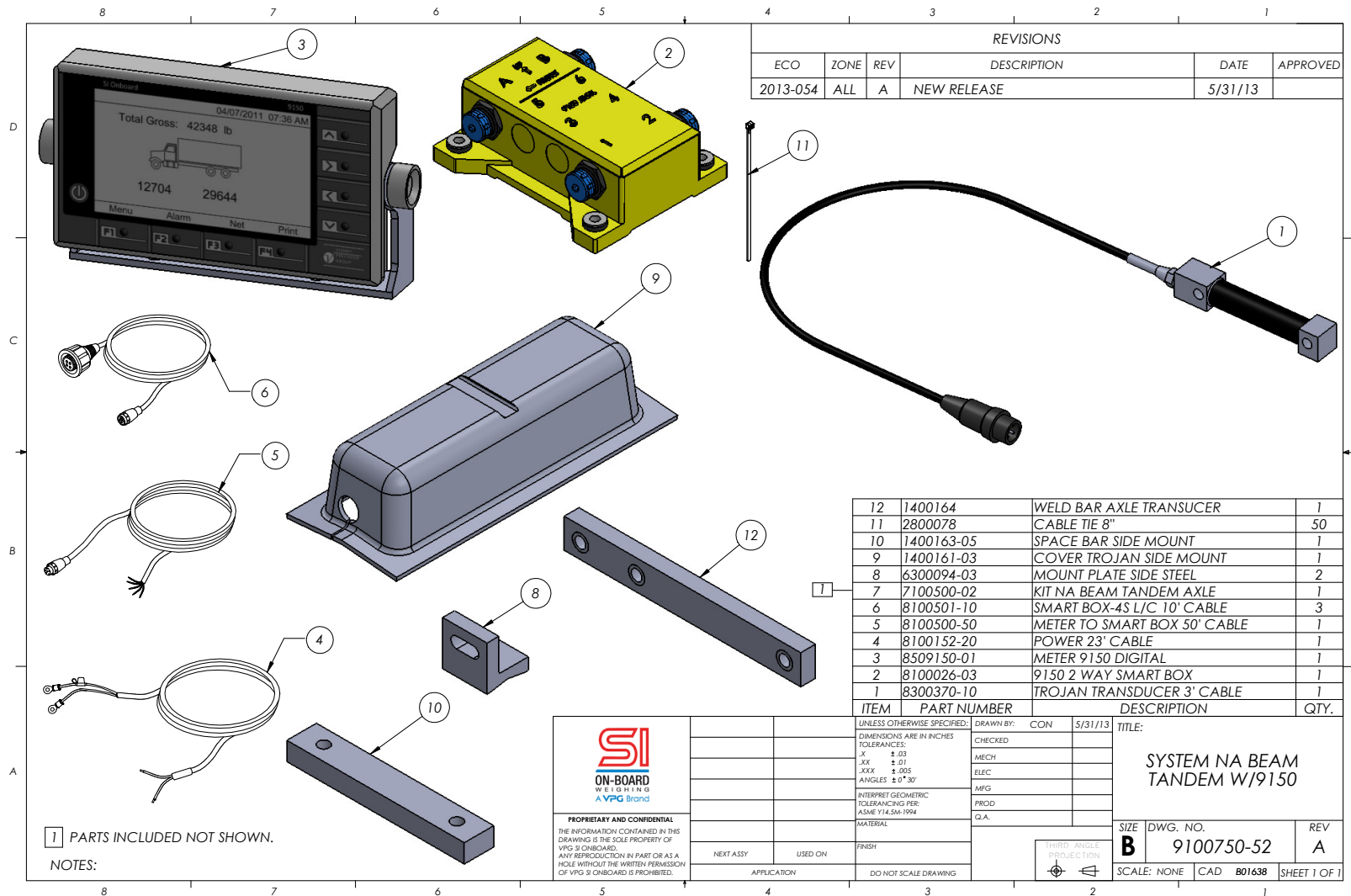
1 PARTS INCLUDED NOT SHOWN.
NOTES:

5920 South 194th Street | Kent, WA 98032 | USA
 Sales Support: 800-638-5111 | Technical Support: 626-202-5047
 E-mail: Obw.usa@vpgsensors.com

sionboard.com



9150 NA Beam Tandem System - 9100750-52

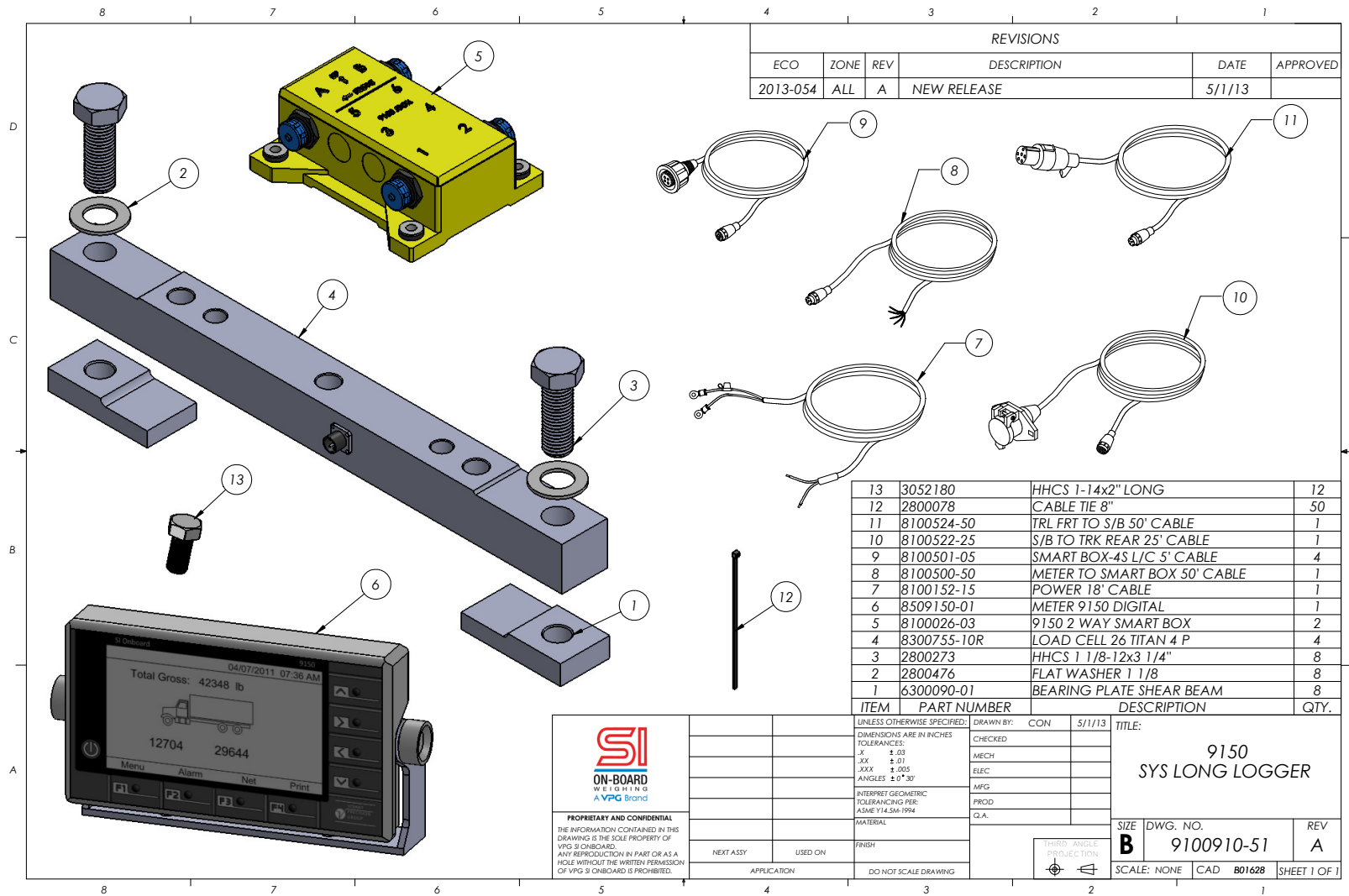


5920 South 194th Street | Kent, WA 98032 | USA
 Sales Support: 800-638-5111 | Technical Support: 626-202-5047
 E-mail: Obw.usa@vpgsensors.com

sionboard.com



9150 Long Logger System - 9100910-51

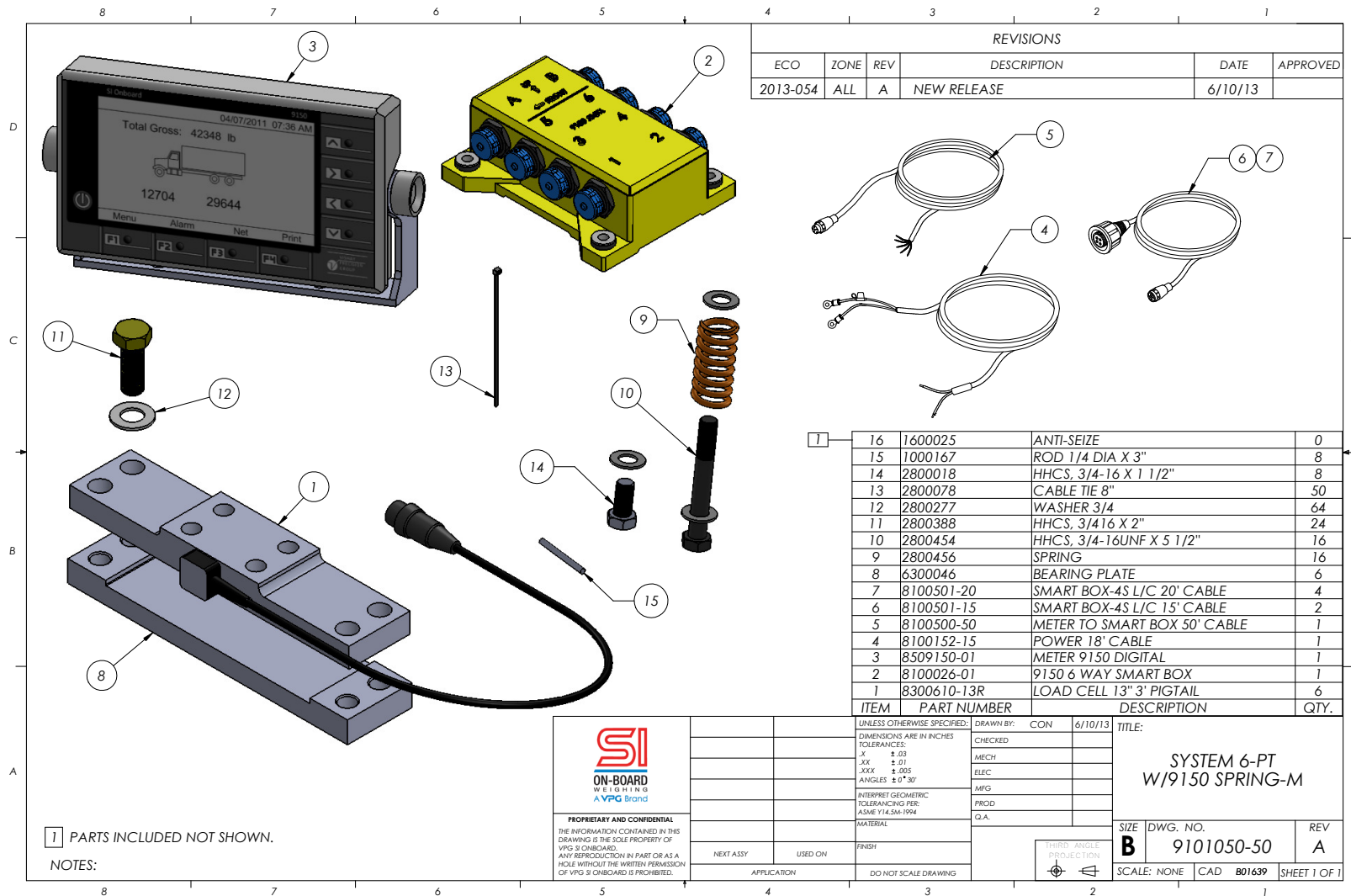


5920 South 194th Street | Kent, WA 98032 | USA
 Sales Support: 800-638-5111 | Technical Support: 626-202-5047
 E-mail: Obw.usa@vpgsensors.com

sionboard.com



9150 6 Point Spring-M System - 9101050-50

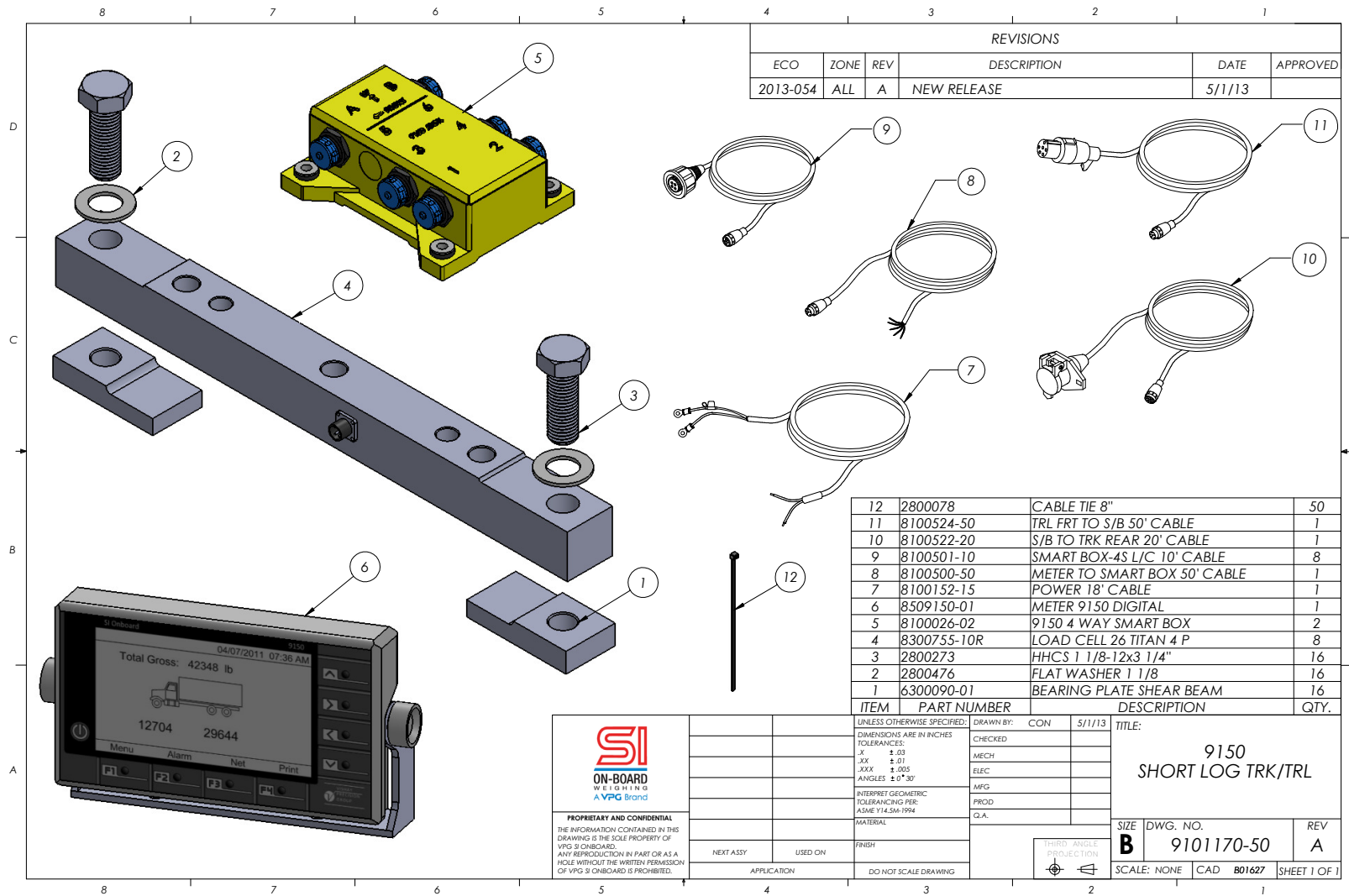


5920 South 194th Street | Kent, WA 98032 | USA
 Sales Support: 800-638-5111 | Technical Support: 626-202-5047
 E-mail: Obw.usa@vpgsensors.com

sionboard.com



9150 Short Logger Truck/Trailer - 9101170-50

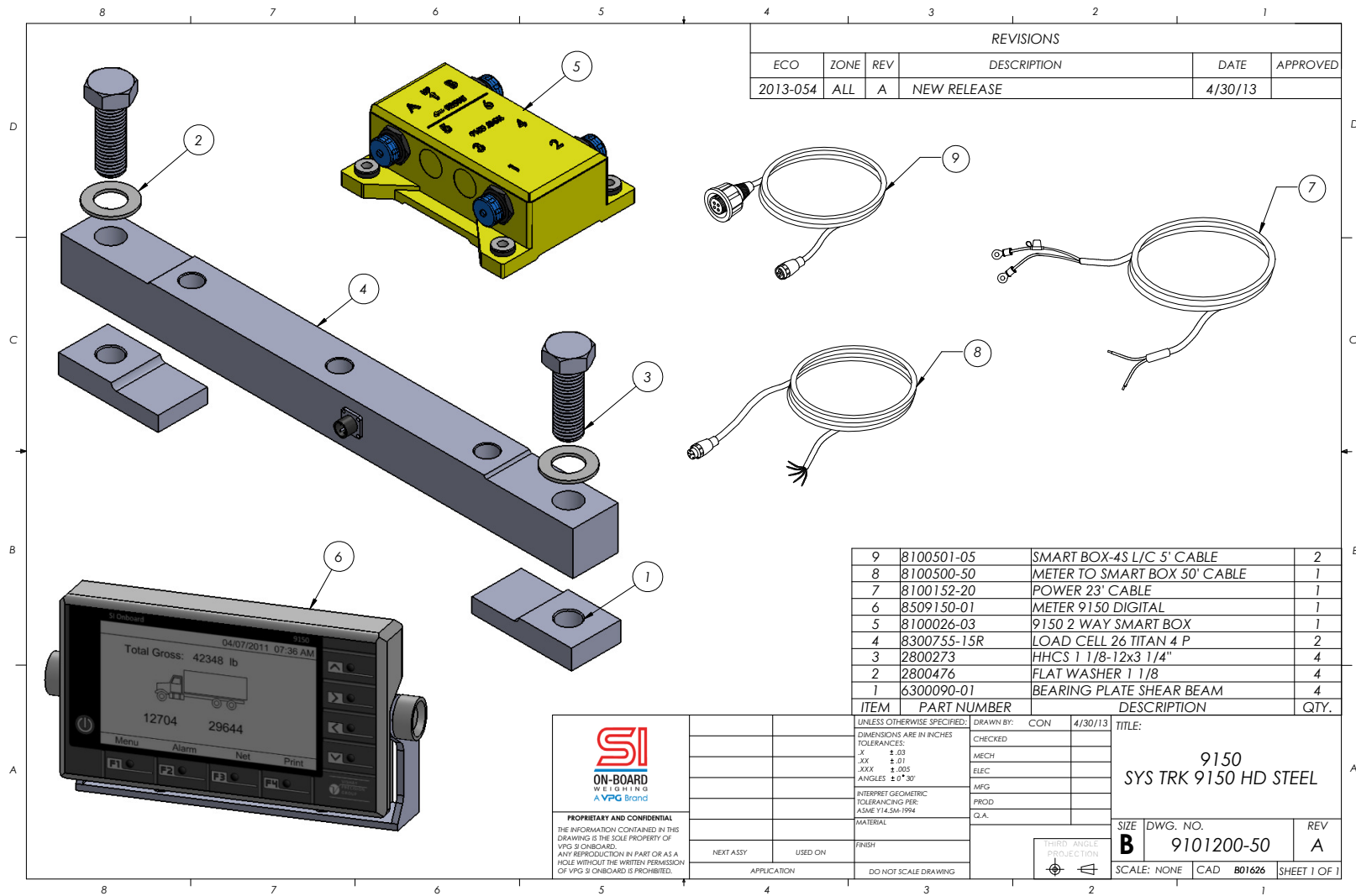


5920 South 194th Street | Kent, WA 98032 | USA
 Sales Support: 800-638-5111 | Technical Support: 626-202-5047
 E-mail: Obw.usa@vpgsensors.com

sionboard.com



9150 TRK HD Steel System - 9101200-50



5920 South 194th Street | Kent, WA 98032 | USA
 Sales Support: 800-638-5111 | Technical Support: 626-202-5047
 E-mail: Obw.usa@vpgsensors.com

sionboard.com



9150 Air Scale, Single Leveling Valve System - 9101310-50

REVISIONS					
ECO	ZONE	REV	DESCRIPTION	DATE	APPROVED
2013-054	ALL	A	NEW RELEASE	5/3/13	

ITEM	PART NUMBER	DESCRIPTION	QTY.
7	7100179-01	MOUNTING KIT TRUCK AIR	1
6	8100506-05	SMART BOX-4S AIR 5' CABLE	1
5	8100500-50	METER TO SMART BOX 50' CABLE	1
4	8100152-20	POWER 23' CABLE	1
3	8509150-01	METER 9150 DIGITAL	1
2	8100026-03	9150 2 WAY SMART BOX	1
1	8300960-10R	PRESSURE TRANS. 200 PSI	1

	DIMENSIONS ARE IN INCHES TOLERANCES: .X ±.03 .XX ±.01 .XXX ±.005 ANGLES ±.0°/30'	DRAWN BY: CON 5/3/13 CHECKED: MECH ELEC MFG PROD Q.A.	TITLE: SYS AIR 9150 SINGLE LEVELING VALVE
	MATERIAL: FINISH: INTERPRET GEOMETRIC TOLERANCING PER: ASME Y14.5M-1994	NEXT ASSY: USED ON: APPLICATION:	SIZE: B DWG. NO.: 9101310-50 SCALE: NONE CAD B01629

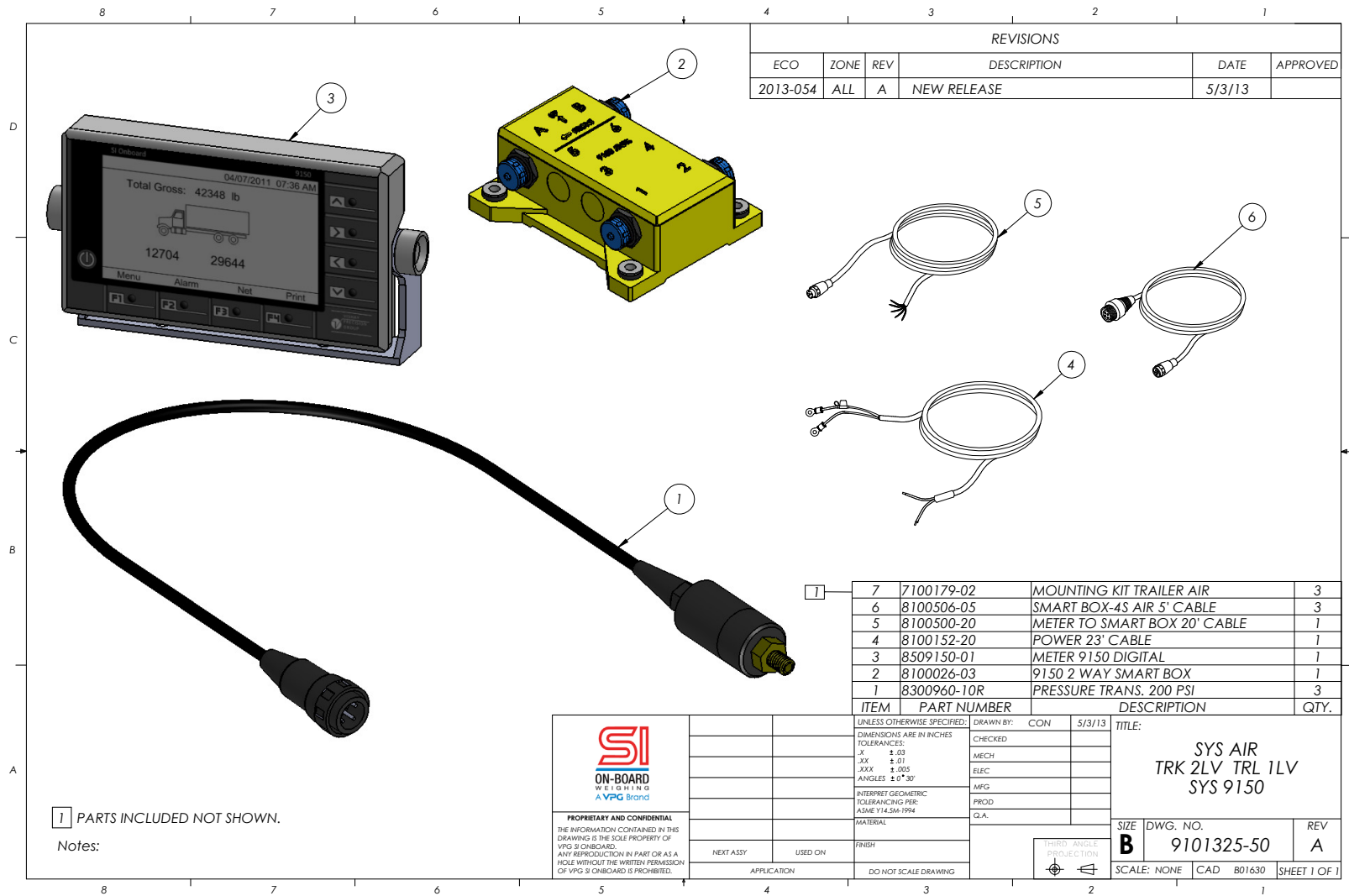
1 PARTS INCLUDED NOT SHOWN.
 NOTES:

5920 South 194th Street | Kent, WA 98032 | USA
 Sales Support: 800-638-5111 | Technical Support: 626-202-5047
 E-mail: Obw.usa@vpgsensors.com

sionboard.com



9150 Trailer Air Scale, 2 Valve, 1 Lv System - 9101325-50

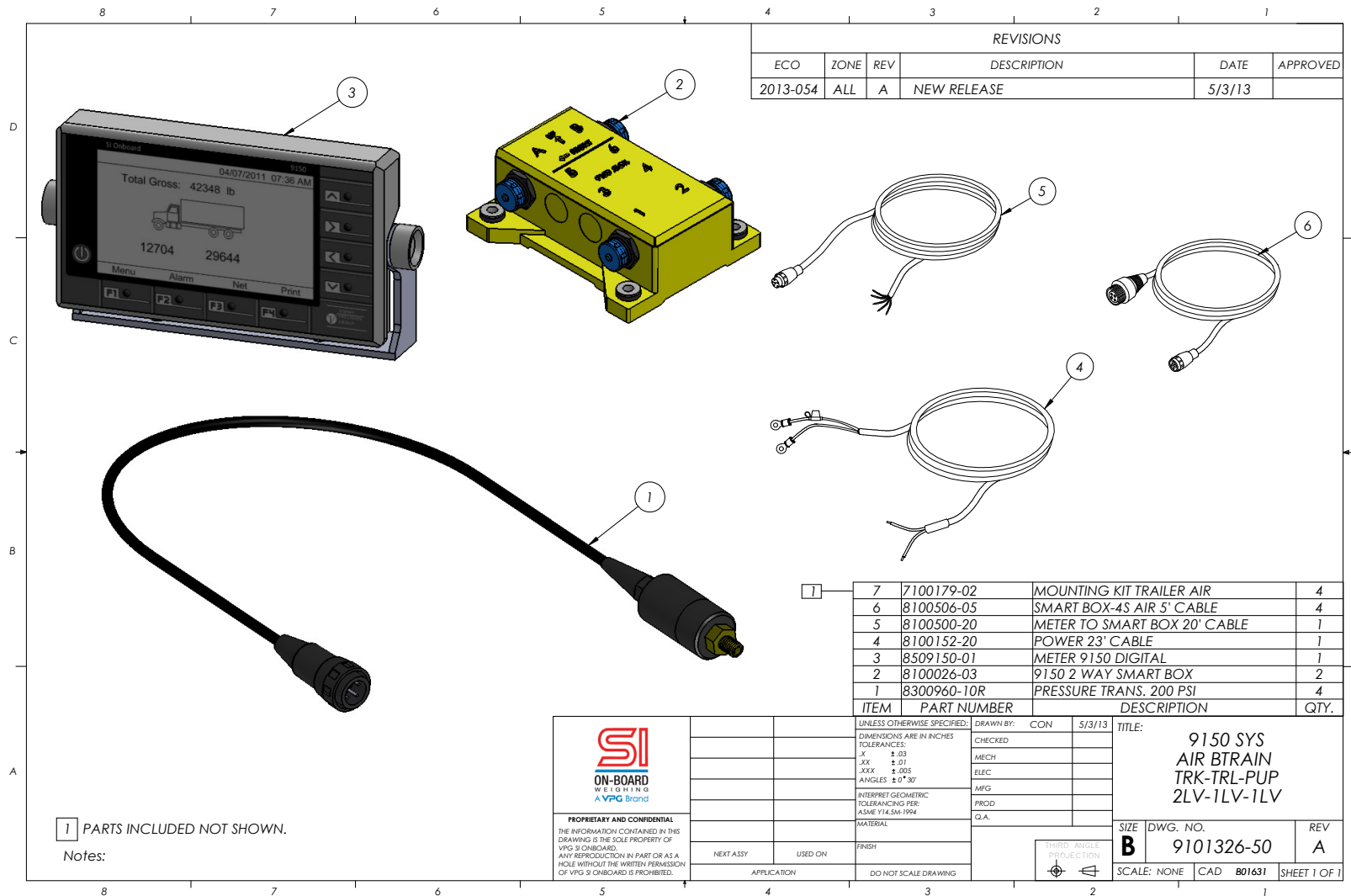


5920 South 194th Street | Kent, WA 98032 | USA
 Sales Support: 800-638-5111 | Technical Support: 626-202-5047
 E-mail: Obw.usa@vpgsensors.com

sionboard.com



9150 B-Train Air Scale, Truck/Trailer, 2LV-1LV-1LV - 9101326-50

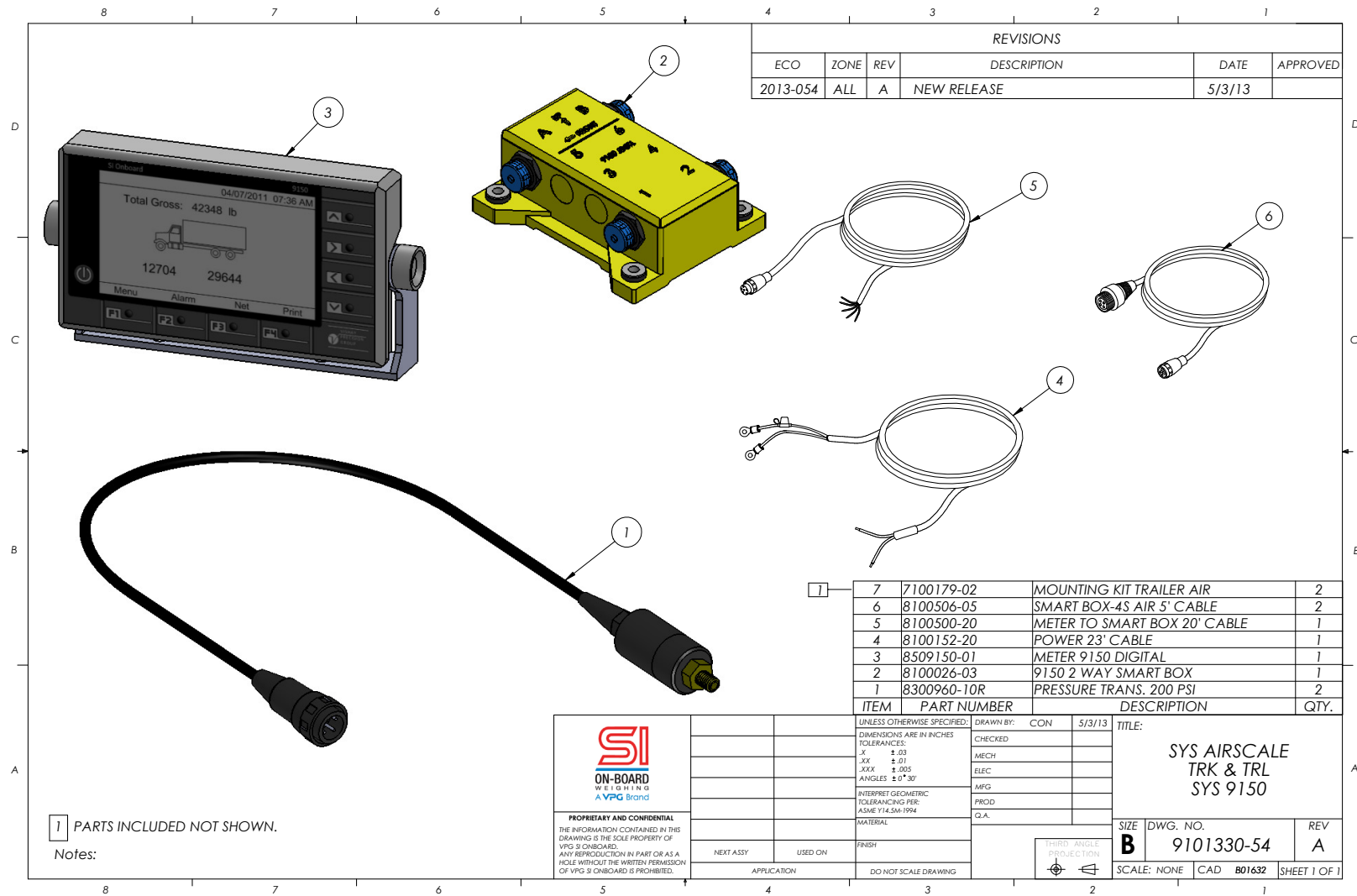


5920 South 194th Street | Kent, WA 98032 | USA
 Sales Support: 800-638-5111 | Technical Support: 626-202-5047
 E-mail: Obw.usa@vpgsensors.com

sionboard.com



9150 Air Scale System, Truck & Trailer - 9101330-54



5920 South 194th Street | Kent, WA 98032 | USA
 Sales Support: 800-638-5111 | Technical Support: 626-202-5047
 E-mail: Obw.usa@vpgsensors.com

sionboard.com



9150 Air Scale System, Single Leveling Valve- 9101331-30

REVISIONS					
ECO	ZONE	REV	DESCRIPTION	DATE	APPROVED
2013-054	ALL	A	NEW RELEASE	5/3/13	

ITEM	PART NUMBER	DESCRIPTION	QTY.
8	7100179-02	MOUNTING KIT TRAILER AIR	3
7	8100503-10	DAISY SMART BOX, 10' CABLE	1
6	8100506-05	SMART BOX-4S AIR 5' CABLE	3
5	8100500-20	METER TO SMART BOX 20' CABLE	1
4	8100152-20	POWER 23' CABLE	1
3	8509150-01	METER 9150 DIGITAL	1
2	8100026-03	9150 2 WAY SMART BOX	2
1	8300960-10R	PRESSURE TRANS. 200 PSI	3

	UNLESS OTHERWISE SPECIFIED: DIMENSIONS ARE IN INCHES TOLERANCES: .X ±.03 .XX ±.01 .XXX ±.005 ANGLES ±9°30'	DRAWN BY: CON 5/3/13 CHECKED: MECH ELEC MFG PROD Q.A.	TITLE: SYS AIR 9150 SUPER B SINGLE LEVELING VALVE	
	PROPRIETARY AND CONFIDENTIAL THE INFORMATION CONTAINED IN THIS DRAWING IS THE SOLE PROPERTY OF VPG SIONBOARD. ANY REPRODUCTION IN PART OR AS A WHOLE WITHOUT THE WRITTEN PERMISSION OF VPG SIONBOARD IS PROHIBITED.	MATERIAL: FINISH: DO NOT SCALE DRAWING	SIZE: B DWG. NO.: 9101331-50 SCALE: NONE CAD: B01633	REV: A SHEET 1 OF 1
	NEXT ASSY: USED ON: APPLICATION:	THIRD ANGLE PROJECTION		

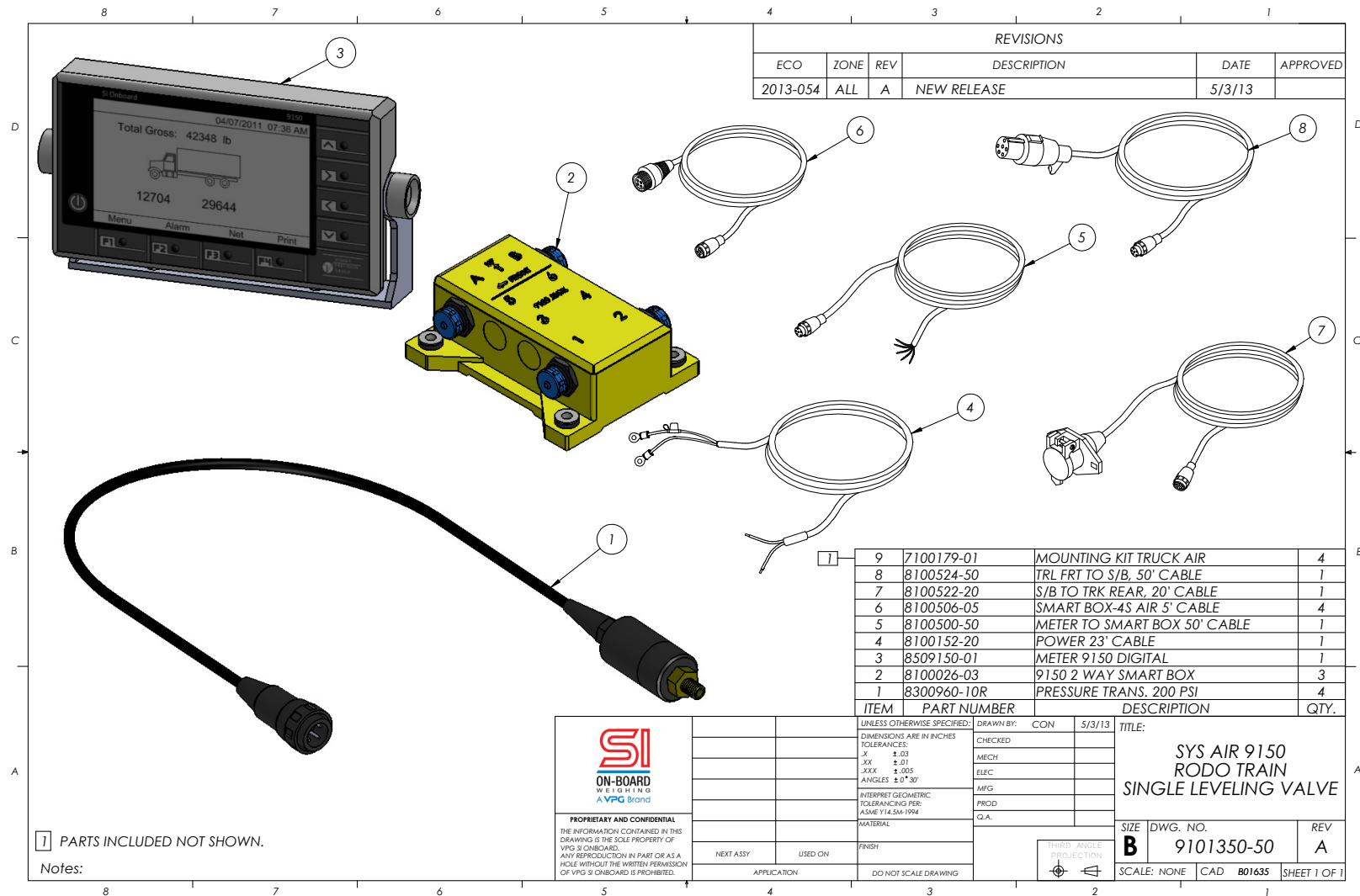
[1] PARTS INCLUDED NOT SHOWN.
 Notes:

5920 South 194th Street | Kent, WA 98032 | USA
 Sales Support: 800-638-5111 | Technical Support: 626-202-5047
 E-mail: Obw.usa@vpgsensors.com

sionboard.com



9150 Air Scale Rodo Train System, Single Lvl Valve- 9101350-50

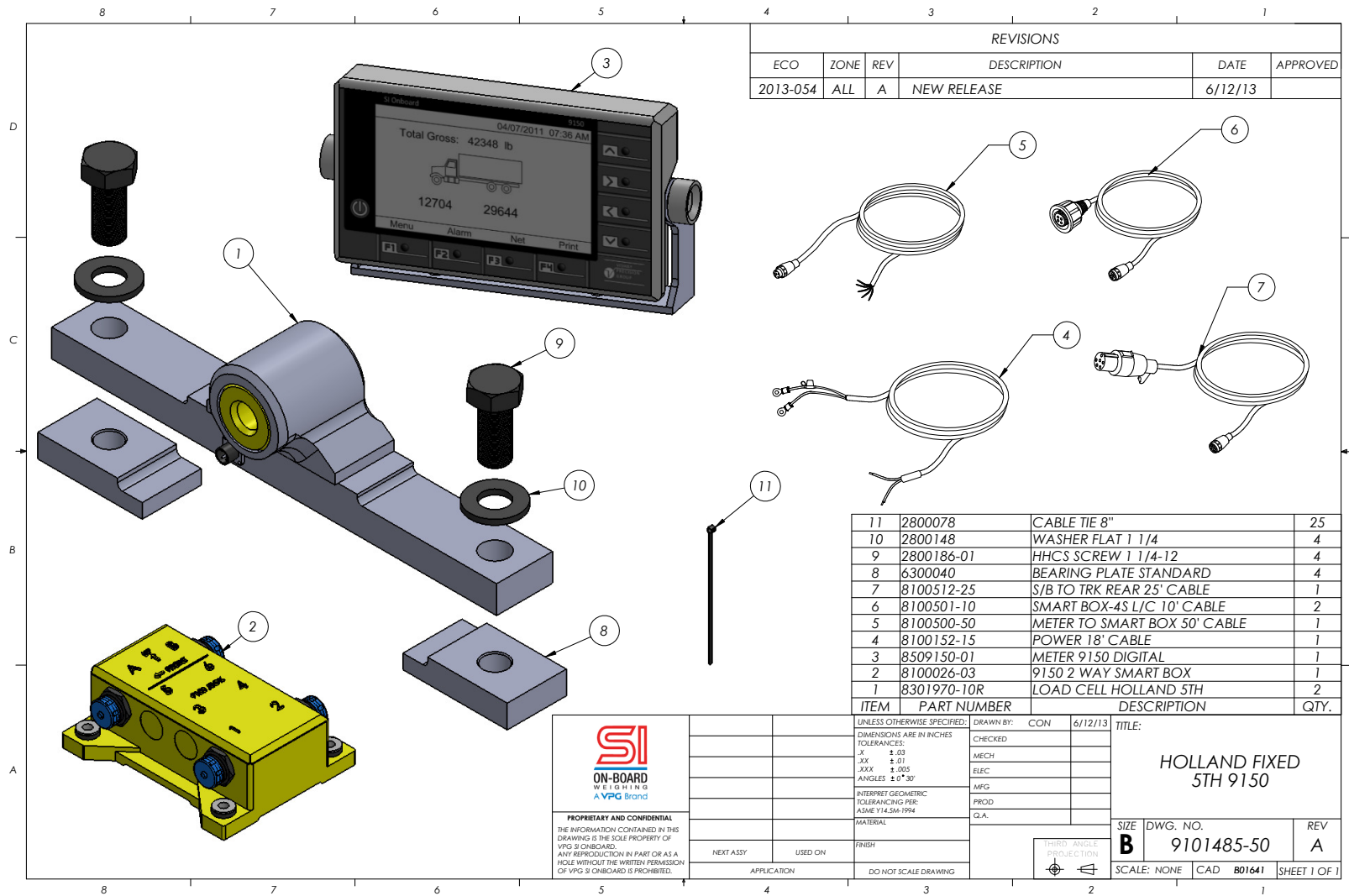


5920 South 194th Street | Kent, WA 98032 | USA
 Sales Support: 800-638-5111 | Technical Support: 626-202-5047
 E-mail: Obw.usa@vpgsensors.com

sionboard.com



9150 Holland Fixed 5th Wheel System- 9101485-50

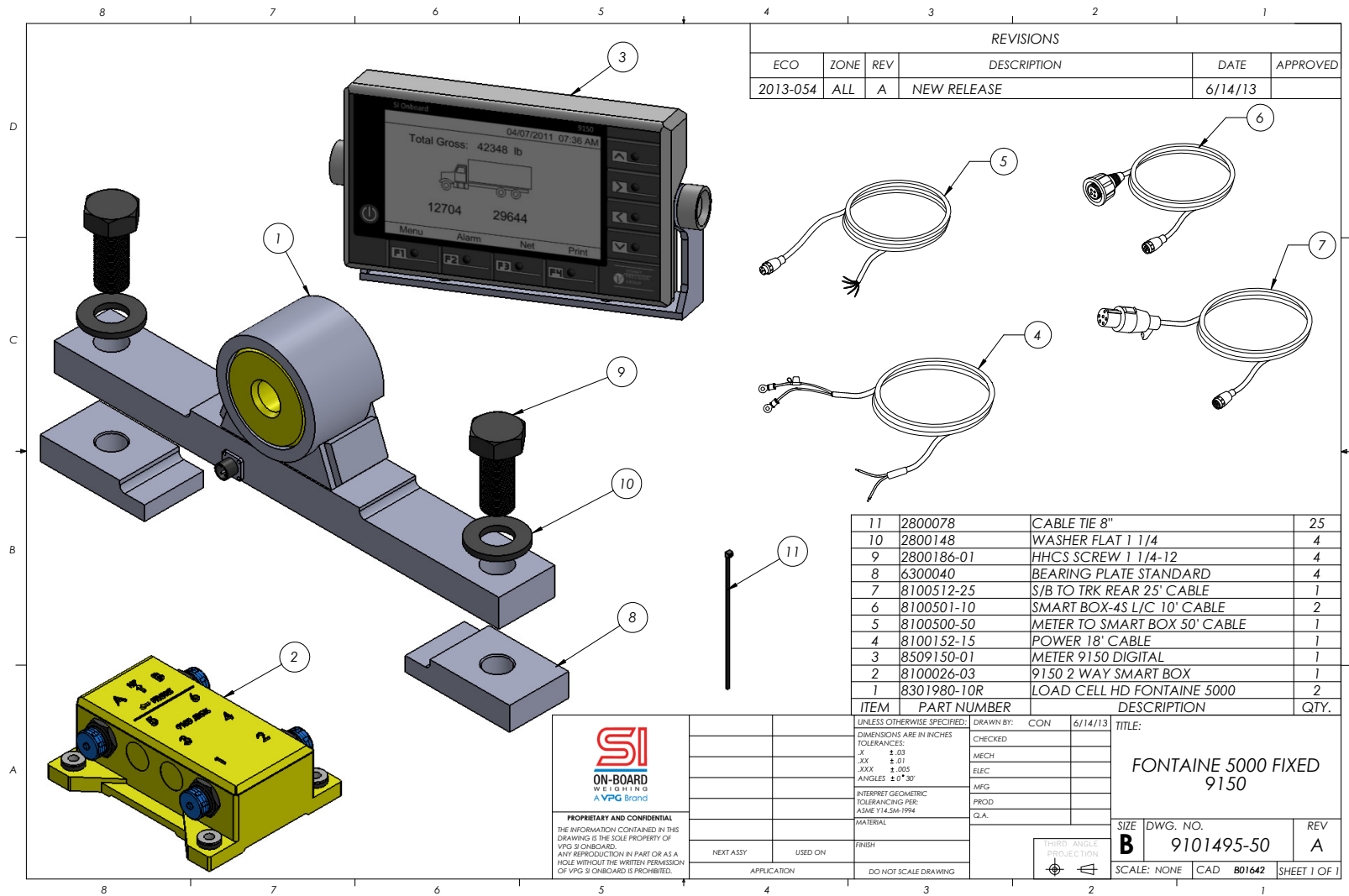


5920 South 194th Street | Kent, WA 98032 | USA
 Sales Support: 800-638-5111 | Technical Support: 626-202-5047
 E-mail: Obw.usa@vpgsensors.com

sionboard.com



9150 Fontaine 5000 Fixed 5th Wheel System- 9101495-50



UNLESS OTHERWISE SPECIFIED:	DRAWN BY:	CON	6/14/13	TITLE:
DIMENSIONS ARE IN INCHES	CHECKED:			FONTAINE 5000 FIXED 9150
TOLERANCES:	MECH			
.X ±.03	ELEC			
.XX ±.01	MFG			
.XXX ±.005	PROD			SIZE DWG. NO. REV
ANGLES ±.5°/30'	Q.A.			B 9101495-50 A
INTERPRET GEOMETRIC TOLERANCING PER: ASME Y14.5M-1994				SCALE: NONE CAD B01642 SHEET 1 OF 1
MATERIAL				
FINISH				
APPLICATION				
NEXT ASSY	USED ON			

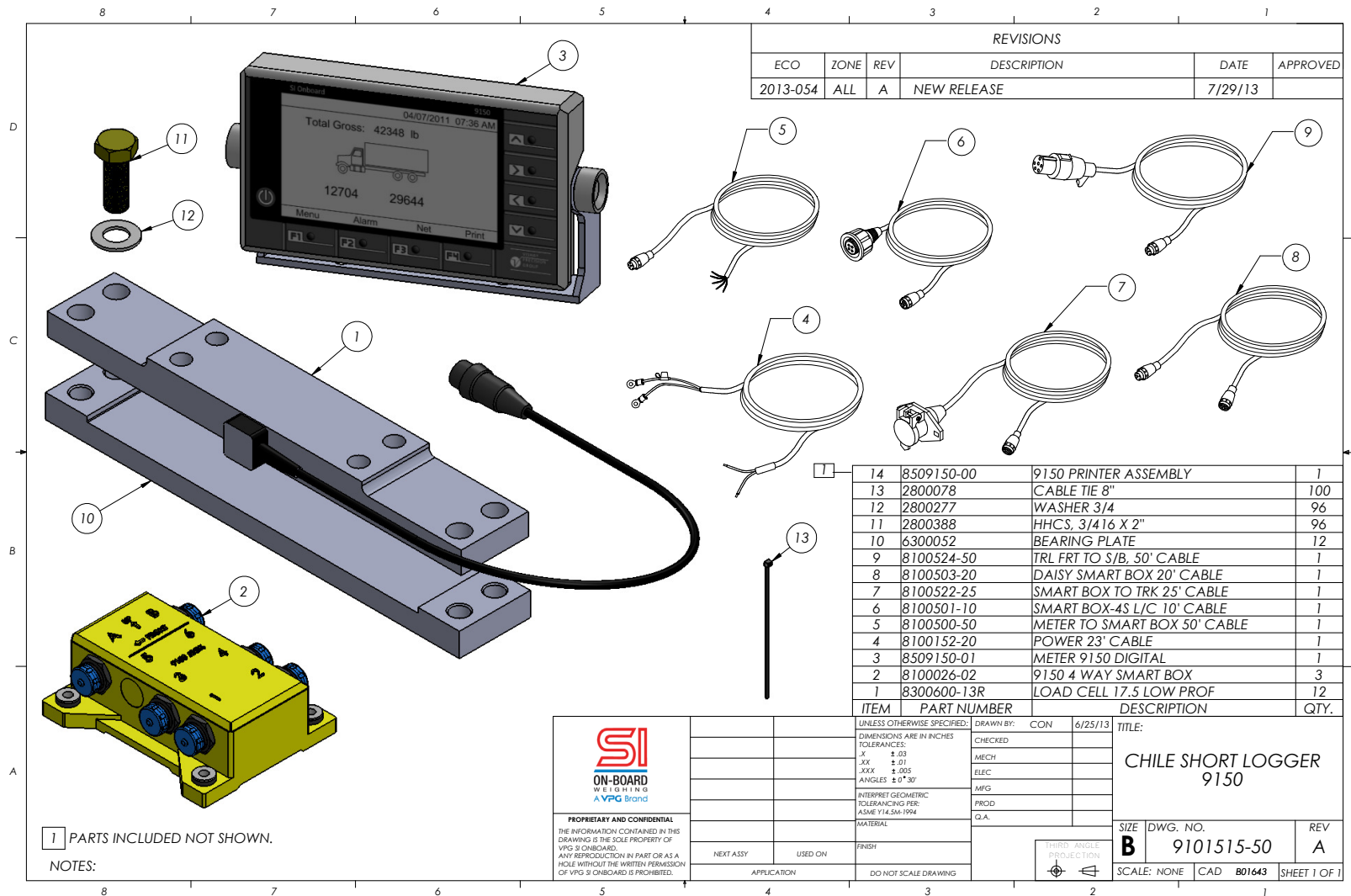
PROPRIETARY AND CONFIDENTIAL
 THE INFORMATION CONTAINED IN THIS DRAWING IS THE SOLE PROPERTY OF VPG'S ONBOARD. ANY REPRODUCTION IN PART OR AS A WHOLE WITHOUT THE WRITTEN PERMISSION OF VPG'S ONBOARD IS PROHIBITED.

5920 South 194th Street | Kent, WA 98032 | USA
 Sales Support: 800-638-5111 | Technical Support: 626-202-5047
 E-mail: Obw.usa@vpgsensors.com

sionboard.com



9150 Chile Short Logger System- 9101515-30



5920 South 194th Street | Kent, WA 98032 | USA
 Sales Support: 800-638-5111 | Technical Support: 626-202-5047
 E-mail: Obw.usa@vpgsensors.com

sionboard.com



9150 Spartan All Air Scale System- 9101520-50

REVISIONS					
ECO	ZONE	REV	DESCRIPTION	DATE	APPROVED
2013-054	ALL	A	NEW RELEASE	5/3/13	

ITEM	PART NUMBER	DESCRIPTION	QTY.
9	7100179-01	MOUNTING KIT TRUCK AIR	6
8	8100503-40	DAISY SMART BOX, 40' CABLE	1
7	8100503-10	DAISY SMART BOX, 10' CABLE	1
6	8100506-05	SMART BOX-4S AIR 5' CABLE	6
5	8100500-50	METER TO SMART BOX 50' CABLE	1
4	8100152-20	POWER 23' CABLE	1
3	8509150-01	METER 9150 DIGITAL	1
2	8100026-03	9150 2 WAY SMART BOX	3
1	8300960-10R	PRESSURE TRANS. 200 PSI	6

	UNLESS OTHERWISE SPECIFIED: DRAWN BY: CON 5/3/13 DIMENSIONS ARE IN INCHES TOLERANCES: .X ±.03 .XX ±.01 .XXX ±.005 ANGLES ±0°30' INTERPRET GEOMETRIC TOLERANCING PER: ASME Y14.5M-1994	CHECKED: MECH ELEC MFG PROD Q.A.	TITLE: SYS SPARTAN AIR 9150 SYS ALL AIR	
	PROPRIETARY AND CONFIDENTIAL THE INFORMATION CONTAINED IN THIS DRAWING IS THE SOLE PROPERTY OF VPG SENSORS. ANY REPRODUCTION IN PART OR AS A WHOLE WITHOUT THE WRITTEN PERMISSION OF VPG SENSORS IS PROHIBITED.	MATERIAL: FINISH: DO NOT SCALE DRAWING	SIZE: B DWG. NO.: 9101520-50 SCALE: NONE CAD B01634	REV: A SHEET 1 OF 1
	NEXT ASSY: USED ON: APPLICATION:	THIRD ANGLE PROJECTION		
	Notes: 1 PARTS INCLUDED NOT SHOWN.			

5920 South 194th Street | Kent, WA 98032 | USA
 Sales Support: 800-638-5111 | Technical Support: 626-202-5047
 E-mail: Obw.usa@vpgsensors.com

sionboard.com



9150 Routeman Full System- 9101785-50

REVISIONS					
ECO	ZONE	REV	DESCRIPTION	DATE	APPROVED
2013-054	ALL	A	NEW RELEASE	6/10/13	

ITEM	PART NUMBER	DESCRIPTION	QTY.
14	1000167	ROD 1/4 DIA X 3"	4
13	2800018	HHCS, 3/4-16 X 1 1/2"	8
12	2800078	CABLE TIE 8"	30
11	2800277	WASHER 3/4	40
10	2800388	HHCS, 3/416 X 2"	16
9	2800454	HHCS, 3/4-16UNF X 5 1/2"	8
8	2800456	SPRING	8
7	6300046	BEARING PLATE	4
6	8100501-15	SMART BOX-4S L/C 15' CABLE	4
5	8100500-50	METER TO SMART BOX 50' CABLE	1
4	8100152-15	POWER 18' CABLE	1
3	8509150-01	METER 9150 DIGITAL	1
2	8100026-02	9150 4 WAY SMART BOX	1
1	8300610-13R	LOAD CELL 13" 3' PIGTAIL	4

	UNLESS OTHERWISE SPECIFIED:	DRAWN BY:	CON	6/10/13	TITLE:	SYS ROUTE MAN FULL W/9150	
	DIMENSIONS ARE IN INCHES	CHECKED:			SIZE		DWG. NO.
	TOLERANCES:	MECH			B		9101785-50
	.X ±.03	ELEC			REV		A
.XX ±.01	MFG			SCALE: NONE	CAD	B01640	
.XXX ±.005	PROD						
ANGLES ±.5°/30'	Q.A.						
INTERPRET GEOMETRIC TOLERANCING PER: ASME Y14.5M-1994							
MATERIAL							
FINISH							
DO NOT SCALE DRAWING							

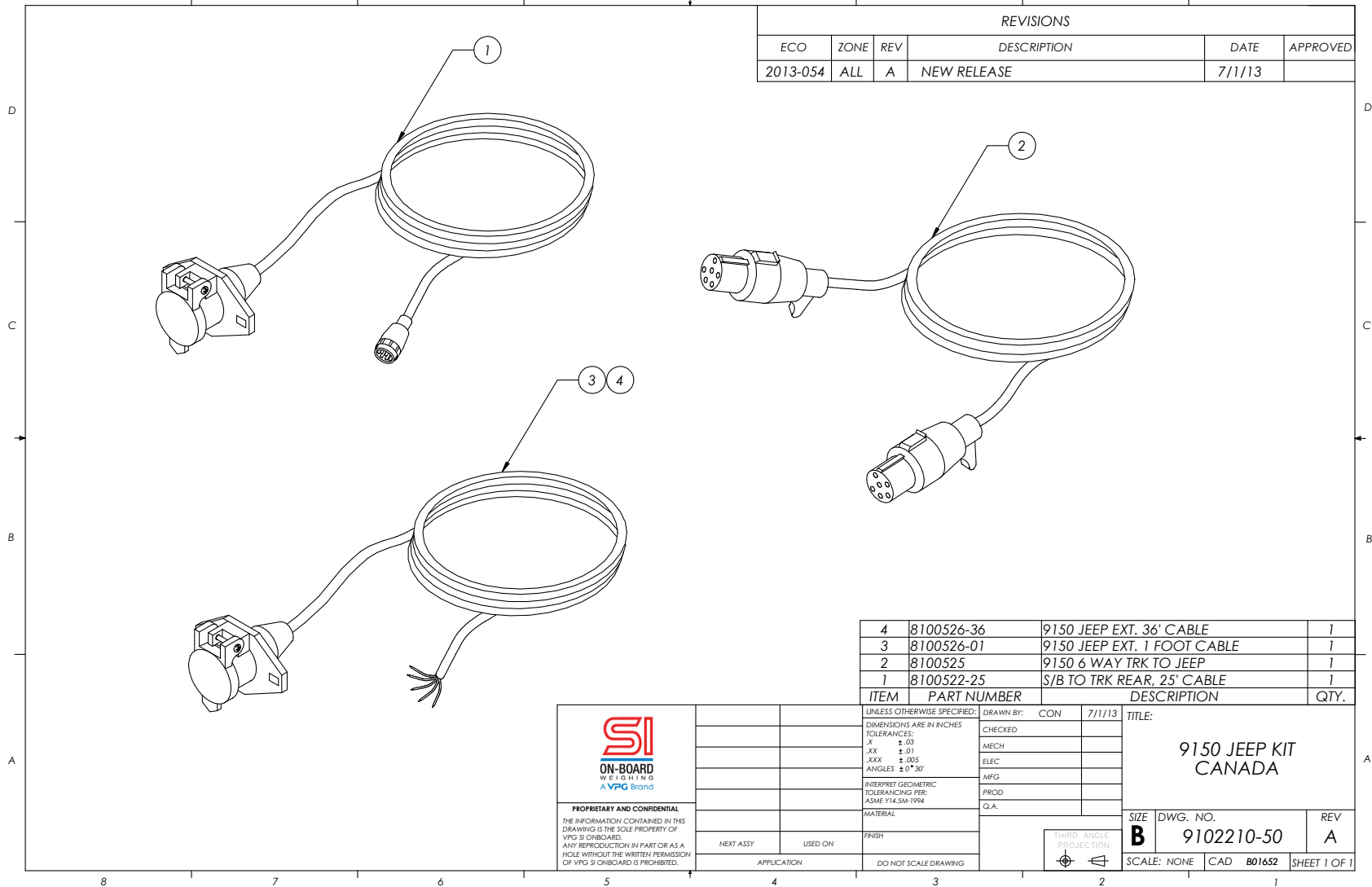
PROPRIETARY AND CONFIDENTIAL
 THE INFORMATION CONTAINED IN THIS DRAWING IS THE SOLE PROPERTY OF VPG SI ONBOARD. ANY REPRODUCTION IN PART OR AS A WHOLE WITHOUT THE WRITTEN PERMISSION OF VPG SI ONBOARD IS PROHIBITED.

5920 South 194th Street | Kent, WA 98032 | USA
 Sales Support: 800-638-5111 | Technical Support: 626-202-5047
 E-mail: Obw.usa@vpgsensors.com

sionboard.com



9150 Canada Jeep Kit- 9102210-50



REVISIONS					
ECO	ZONE	REV	DESCRIPTION	DATE	APPROVED
2013-054	ALL	A	NEW RELEASE	7/1/13	

ITEM	PART NUMBER	DESCRIPTION	QTY.
4	8100526-36	9150 JEEP EXT. 36' CABLE	1
3	8100526-01	9150 JEEP EXT. 1 FOOT CABLE	1
2	8100525	9150 6 WAY TRK TO JEEP	1
1	8100522-25	S/B TO TRK REAR, 25' CABLE	1

<p>PROPRIETARY AND CONFIDENTIAL THE INFORMATION CONTAINED IN THIS DRAWING IS THE SOLE PROPERTY OF VPG SI ONBOARD. ANY REPRODUCTION IN PART OR AS A WHOLE WITHOUT THE WRITTEN PERMISSION OF VPG SI ONBOARD IS PROHIBITED.</p>	UNLESS OTHERWISE SPECIFIED:	DRAWN BY: CON	7/1/13	TITLE:
	DIMENSIONS ARE IN INCHES	CHECKED:		9150 JEEP KIT CANADA
	TOLERANCES:	MECH		
	.X ±.03	ELEC		
.XX ±.01	MFG			
.XXX ±.005	PROD			
ANGLES ±0° 30'	Q.A.			
INTERPRET GEOMETRIC TOLERANCING PER: ASME Y14.5M-1994	FINISH			
MATERIAL:	APPLICATION	DO NOT SCALE DRAWING		
	NEXT ASSY	USED ON		



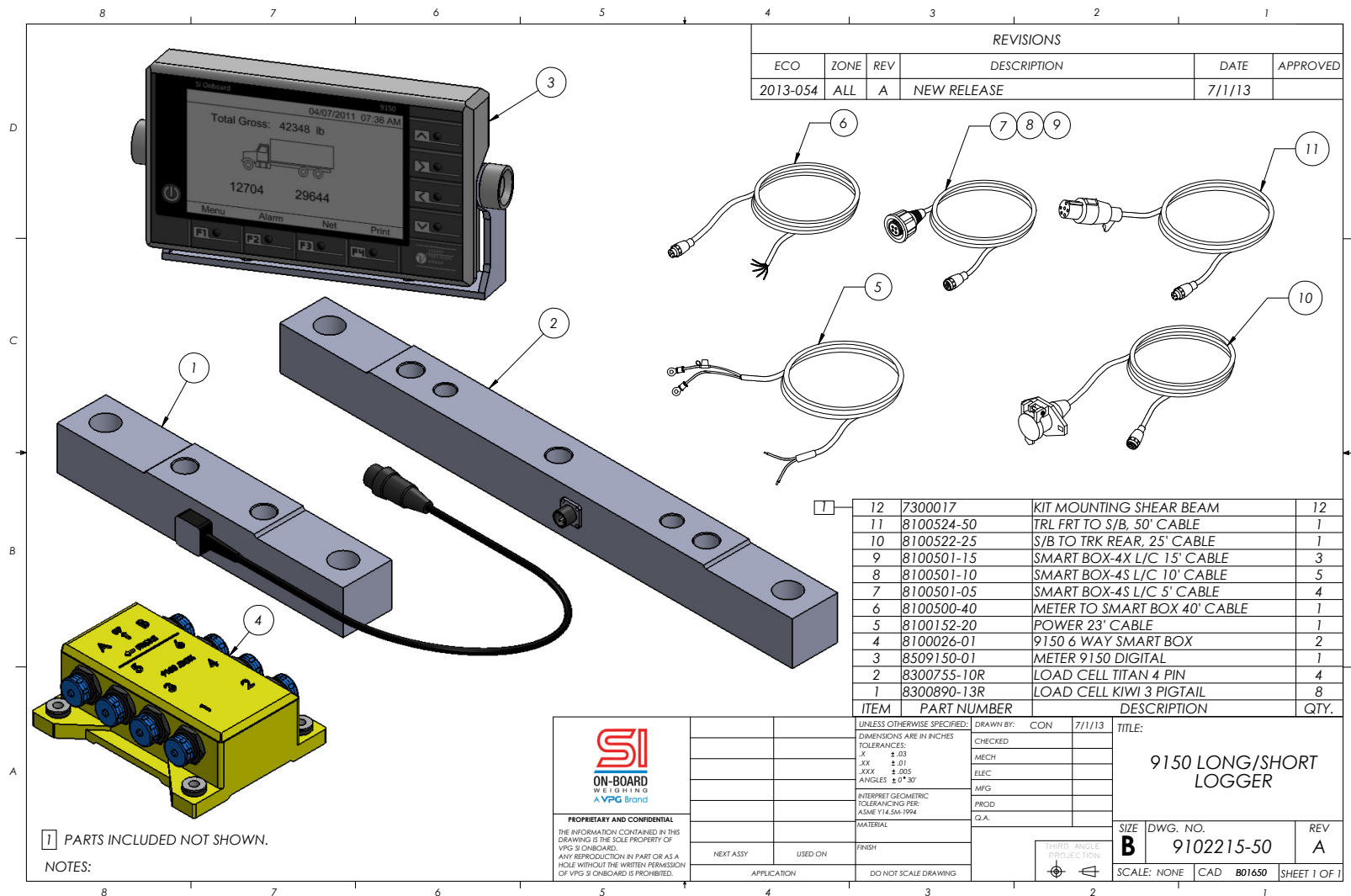
SIZE	DWG. NO.	REV
B	9102210-50	A
SCALE: NONE	CAD B01652	SHEET 1 OF 1

5920 South 194th Street | Kent, WA 98032 | USA
 Sales Support: 800-638-5111 | Technical Support: 626-202-5047
 E-mail: Obw.usa@vpgsensors.com

sionboard.com



9150 Long/Short Logger System- 9102215-50

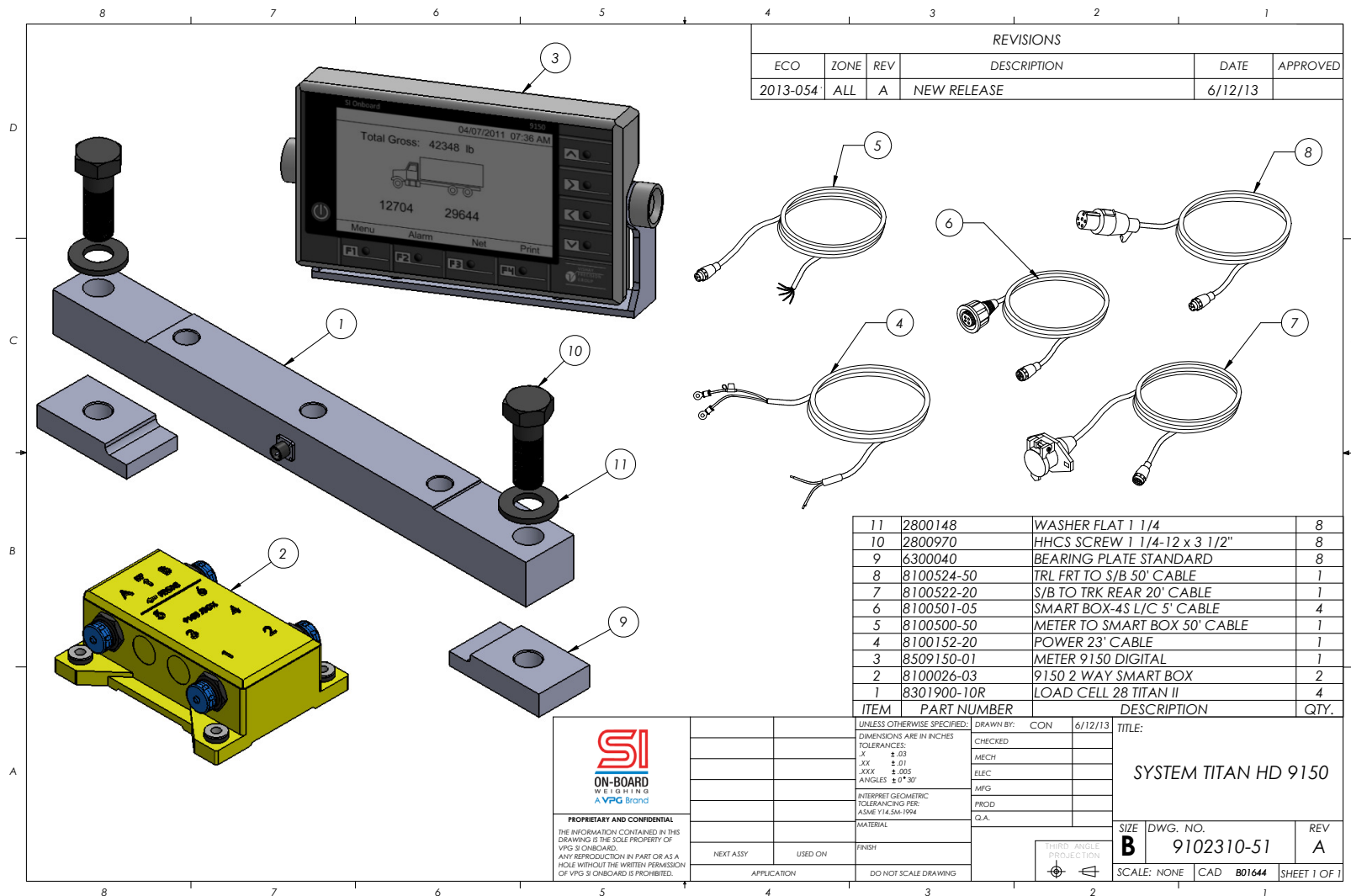


5920 South 194th Street | Kent, WA 98032 | USA
 Sales Support: 800-638-5111 | Technical Support: 626-202-5047
 E-mail: Obw.usa@vpgsensors.com

sionboard.com



9150 Titan Heavy Duty System- 9102310-51

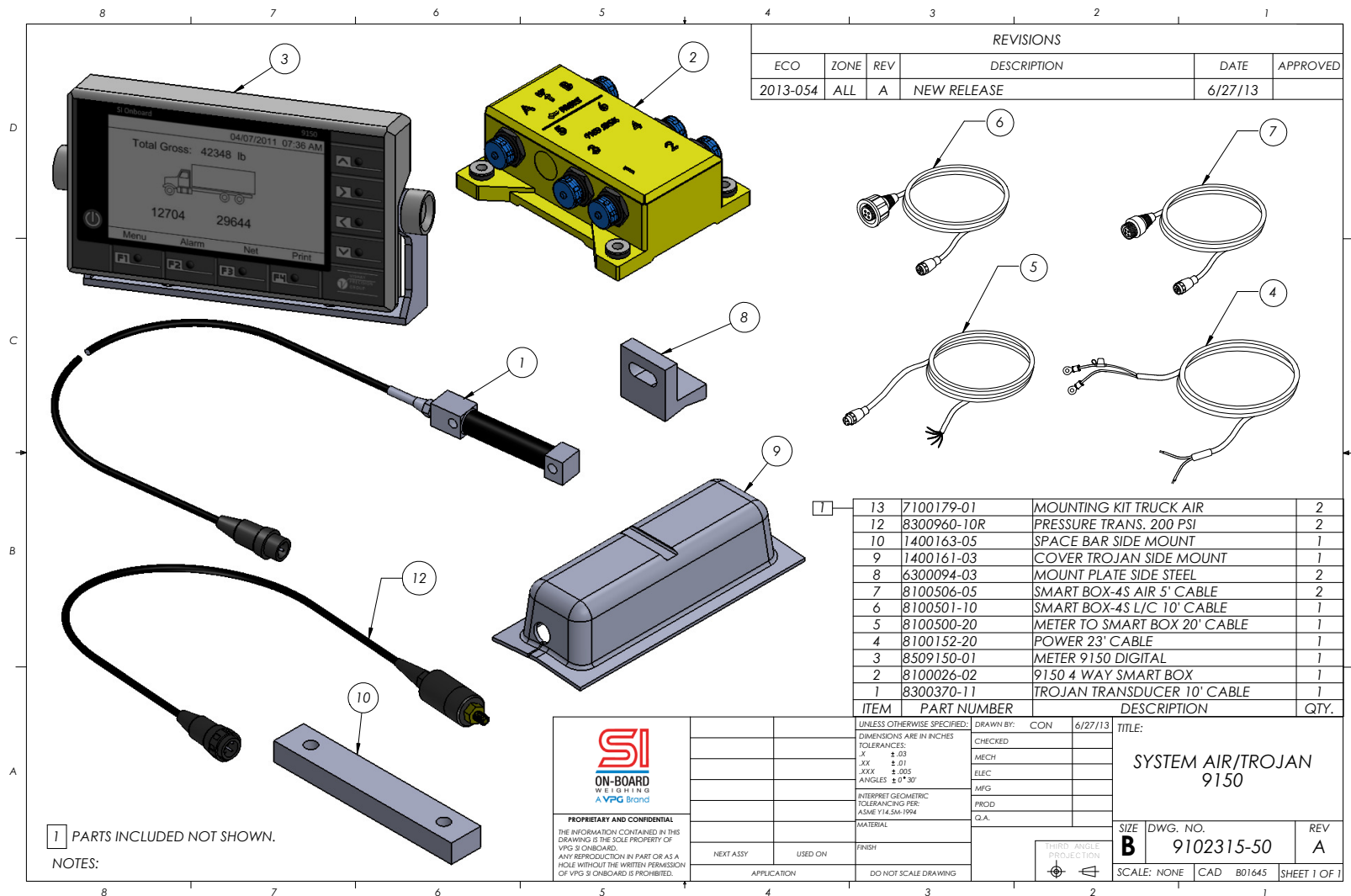


5920 South 194th Street | Kent, WA 98032 | USA
 Sales Support: 800-638-5111 | Technical Support: 626-202-5047
 E-mail: Obw.usa@vpgsensors.com

sionboard.com



9150 Trojan Air Scale System- 9102315-30



REVISIONS					
ECO	ZONE	REV	DESCRIPTION	DATE	APPROVED
2013-054	ALL	A	NEW RELEASE	6/27/13	

ITEM	PART NUMBER	DESCRIPTION	QTY.
13	7100179-01	MOUNTING KIT TRUCK AIR	2
12	8300960-10R	PRESSURE TRANS. 200 PSI	2
10	1400163-05	SPACE BAR SIDE MOUNT	1
9	1400161-03	COVER TROJAN SIDE MOUNT	1
8	6300094-03	MOUNT PLATE SIDE STEEL	2
7	8100506-05	SMART BOX-4S AIR 5' CABLE	2
6	8100501-10	SMART BOX-4S L/C 10' CABLE	1
5	8100500-20	METER TO SMART BOX 20' CABLE	1
4	8100152-20	POWER 23' CABLE	1
3	8509150-01	METER 9150 DIGITAL	1
2	8100026-02	9150 4 WAY SMART BOX	1
1	8300370-11	TROJAN TRANSDUCER 10' CABLE	1

SI
ON-BOARD
WEIGHING
A VPG Brand

PROPRIETARY AND CONFIDENTIAL
THE INFORMATION CONTAINED IN THIS DRAWING IS THE SOLE PROPERTY OF VPG SI ONBOARD. ANY REPRODUCTION IN PART OR AS A WHOLE WITHOUT THE WRITTEN PERMISSION OF VPG SI ONBOARD IS PROHIBITED.

UNLESS OTHERWISE SPECIFIED:	DRAWN BY: CON	6/27/13	TITLE:
DIMENSIONS ARE IN INCHES	CHECKED		SYSTEM AIR/TROJAN 9150
TOLERANCES:	MECH		
.X ±.03	ELEC		
.XX ±.01	MFG		
.XXX ±.005	PROD		
ANGLES ±0°30'	G.A.		
INTERPRET GEOMETRIC TOLERANCING PER: ASME Y14.5M-1994	MATERIAL		
FINISH	APPICATION	USED ON	
DO NOT SCALE DRAWING			

SIZE	DWG. NO.	REV
B	9102315-50	A
SCALE: NONE	CAD: B01645	SHEET 1 OF 1

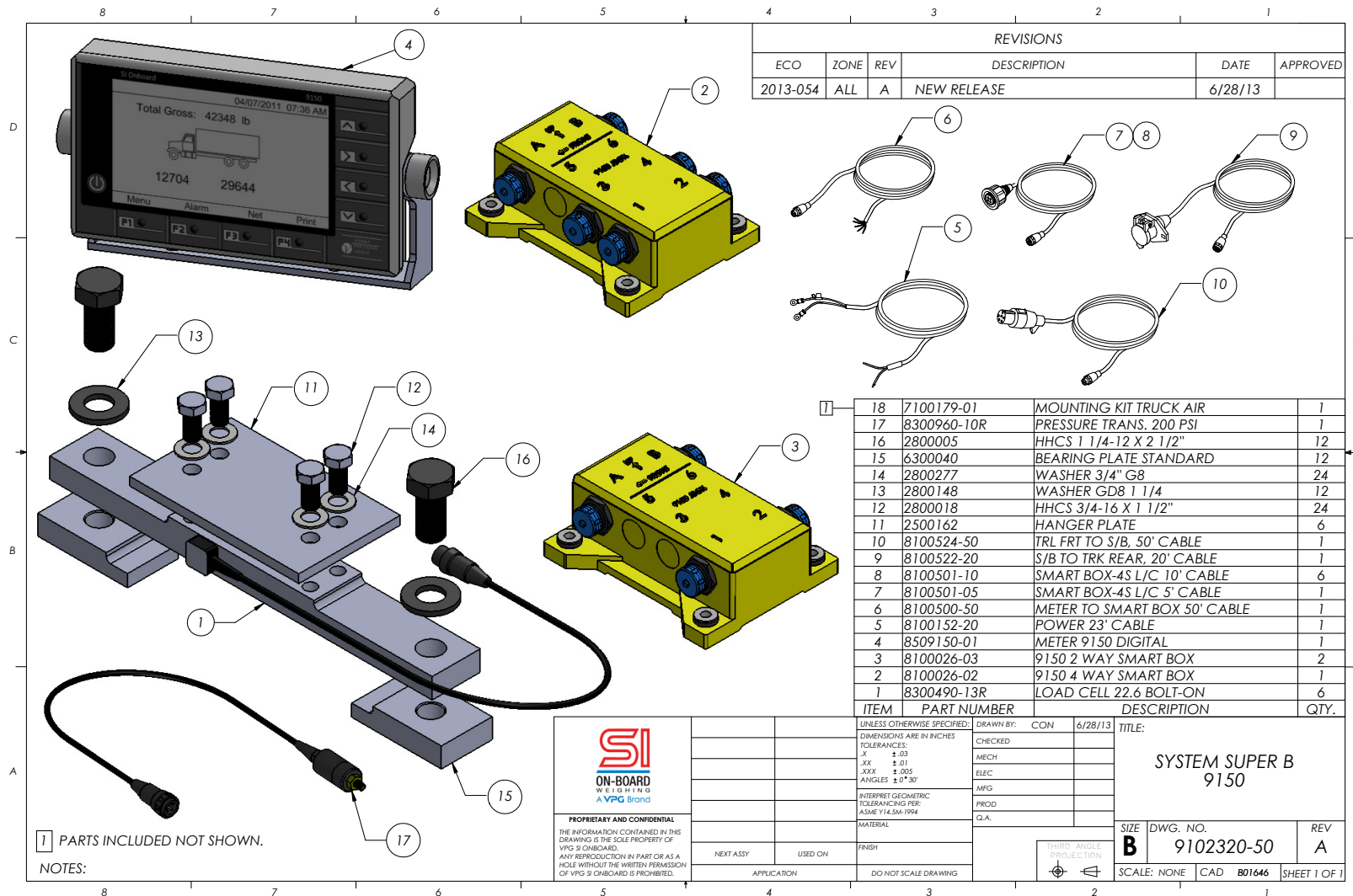
1 PARTS INCLUDED NOT SHOWN.
NOTES:

5920 South 194th Street | Kent, WA 98032 | USA
 Sales Support: 800-638-5111 | Technical Support: 626-202-5047
 E-mail: Obw.usa@vpgsensors.com

sionboard.com



9150 Super B System- 9102320-50



5920 South 194th Street | Kent, WA 98032 | USA
 Sales Support: 800-638-5111 | Technical Support: 626-202-5047
 E-mail: Obw.usa@vpgsensors.com

sionboard.com



9150 Air Scale, TRK 2LV, TRL 1LV System- 9101325-50

REVISIONS					
ECO	ZONE	REV	DESCRIPTION	DATE	APPROVED
2013-054	ALL	A	NEW RELEASE	5/3/13	

ITEM	PART NUMBER	DESCRIPTION	QTY.
7	7100179-02	MOUNTING KIT TRAILER AIR	3
6	8100506-05	SMART BOX-4S AIR 5' CABLE	3
5	8100500-20	METER TO SMART BOX 20' CABLE	1
4	8100152-20	POWER 23' CABLE	1
3	8509150-01	METER 9150 DIGITAL	1
2	8100026-03	9150 2 WAY SMART BOX	1
1	8300960-10R	PRESSURE TRANS. 200 PSI	3

	DIMENSIONS ARE IN INCHES TOLERANCES: .X ±.03 .XX ±.01 .XXX ±.005 ANGLES ±0°.30'	DRAWN BY: CON DATE: 5/3/13 CHECKED: MECH: ELEC: MFG: PROD: G.A.	TITLE: SYS AIR TRK 2LV TRL 1LV SYS 9150
	INTERPRET GEOMETRIC TOLERANCING PER: ASME Y14.5M-1994	MATERIAL:	SIZE: B DWG. NO.: 9101325-50 REV: A
	FINISH:	APPLICATION:	SCALE: NONE CAD: B01630 SHEET 1 OF 1
	NEXT ASSY:	USED ON:	DO NOT SCALE DRAWING

1 PARTS INCLUDED NOT SHOWN.

Notes:

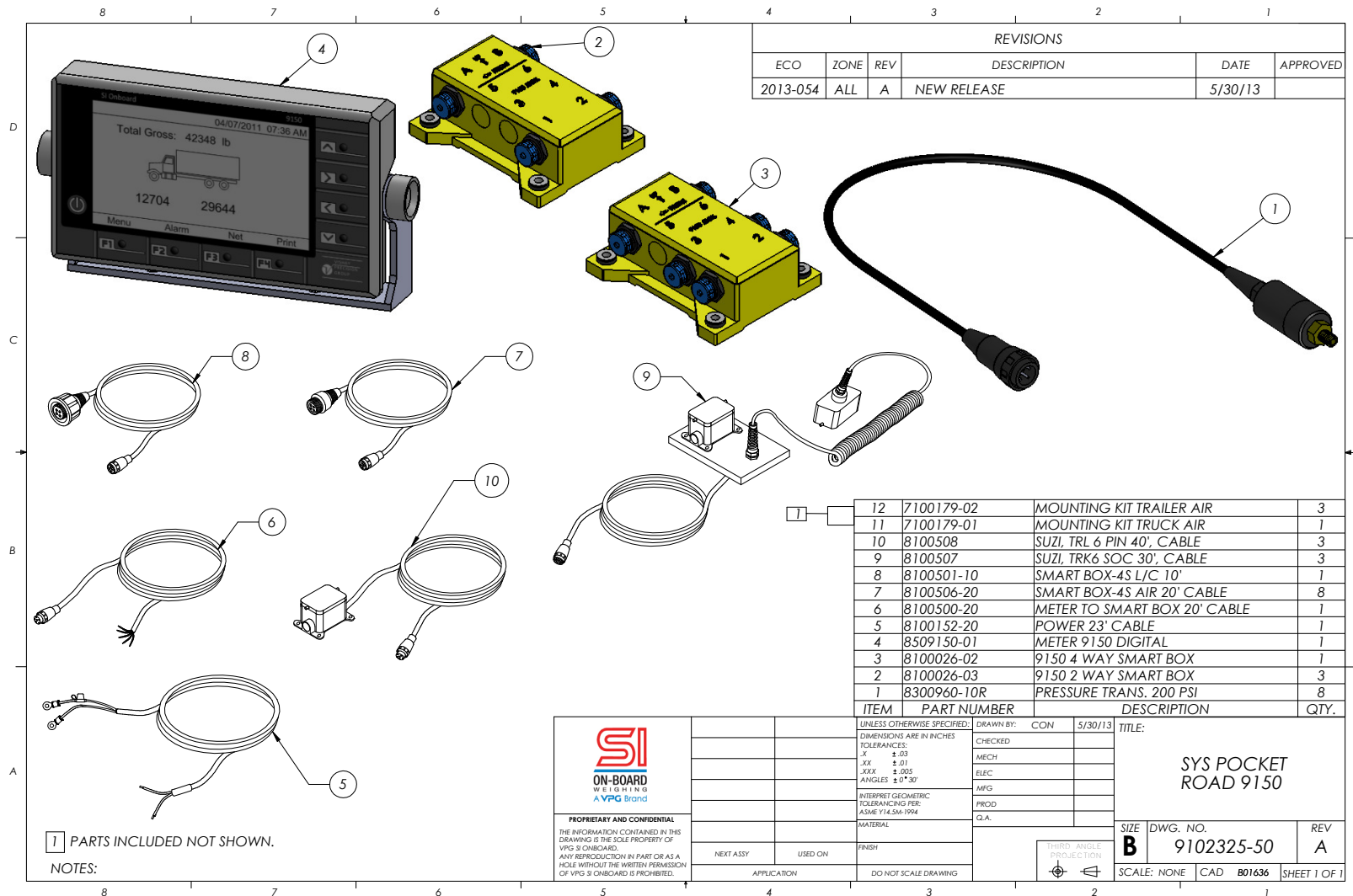
PROPRIETARY AND CONFIDENTIAL
 THE INFORMATION CONTAINED IN THIS DRAWING IS THE SOLE PROPERTY OF VPG SENSORS. ANY REPRODUCTION IN PART OR AS A WHOLE WITHOUT THE WRITTEN PERMISSION OF VPG SENSORS IS PROHIBITED.

5920 South 194th Street | Kent, WA 98032 | USA
 Sales Support: 800-638-5111 | Technical Support: 626-202-5047
 E-mail: Obw.usa@vpgsensors.com

sionboard.com



9150 Pocket Road System- 9102325-50

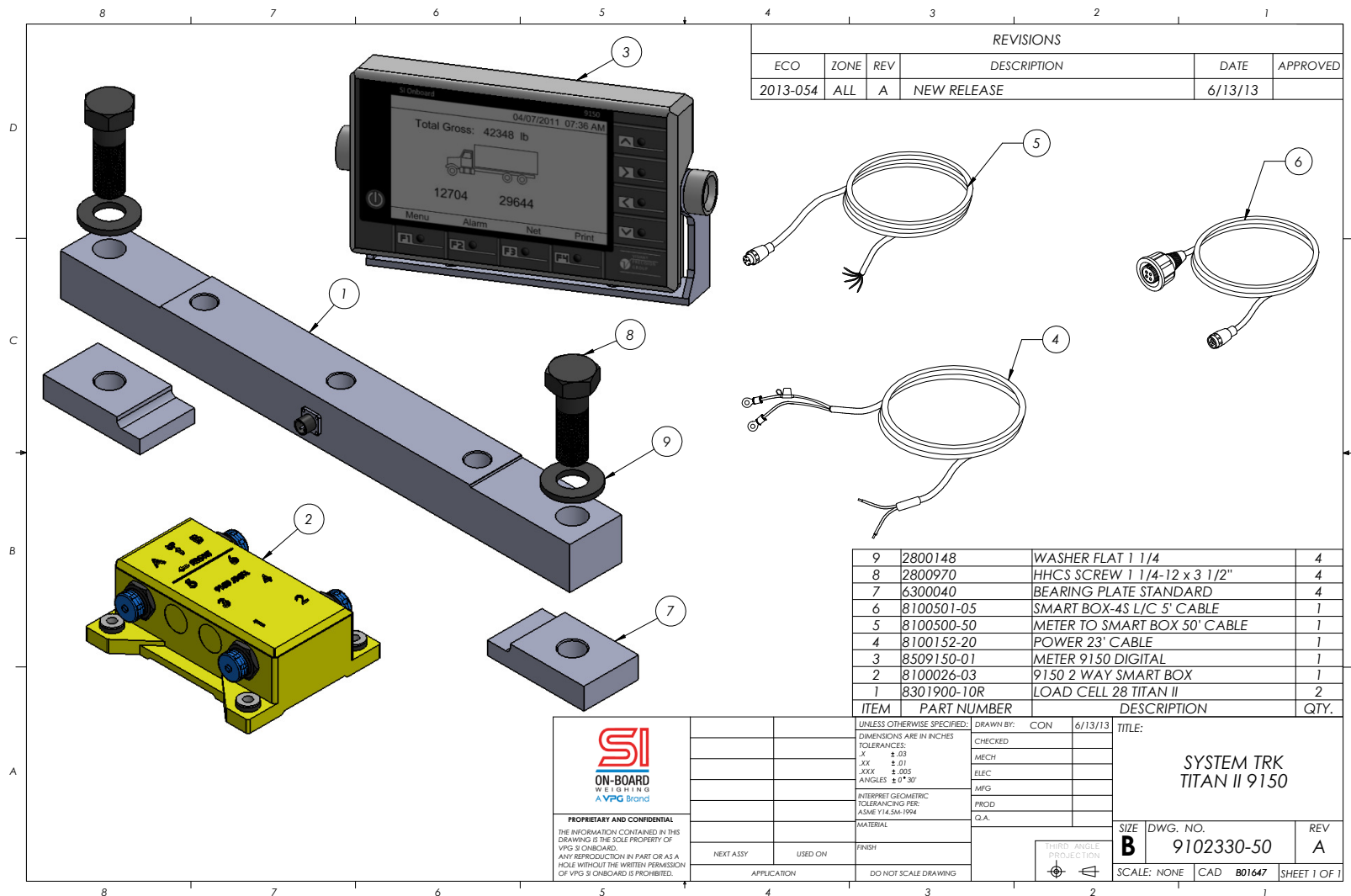


5920 South 194th Street | Kent, WA 98032 | USA
 Sales Support: 800-638-5111 | Technical Support: 626-202-5047
 E-mail: Obw.usa@vpgsensors.com

sionboard.com



9150 Titan II Tractor System- 9102330-50

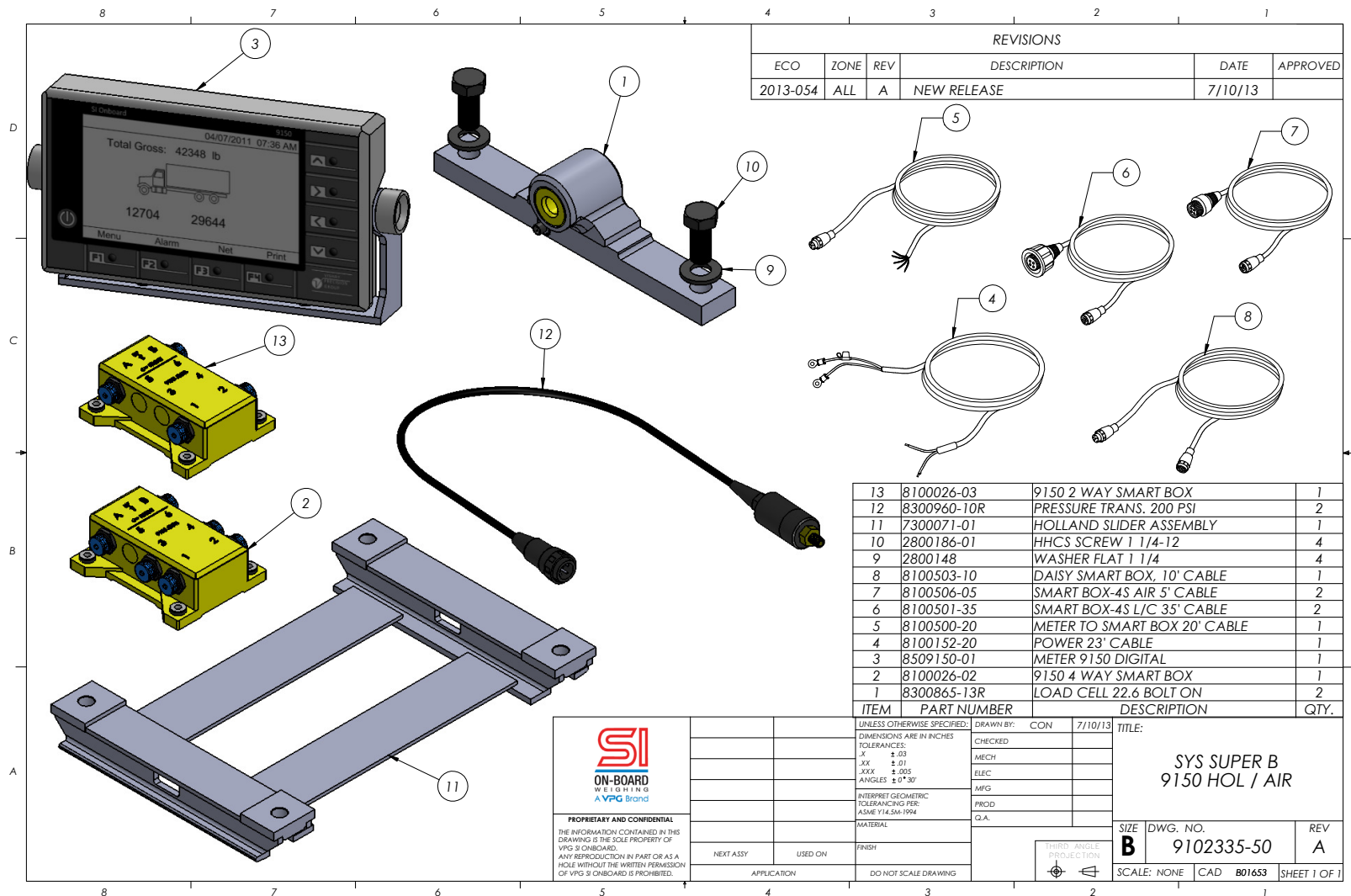


5920 South 194th Street | Kent, WA 98032 | USA
 Sales Support: 800-638-5111 | Technical Support: 626-202-5047
 E-mail: Obw.usa@vpgsensors.com

sionboard.com



9150 Super B Holland/Air Scale System- 9102335-50



REVISIONS					
ECO	ZONE	REV	DESCRIPTION	DATE	APPROVED
2013-054	ALL	A	NEW RELEASE	7/10/13	

ITEM	PART NUMBER	DESCRIPTION	QTY.
13	8100026-03	9150 2 WAY SMART BOX	1
12	8300960-10R	PRESSURE TRANS. 200 PSI	2
11	7300071-01	HOLLAND SLIDER ASSEMBLY	1
10	2800186-01	HHCS SCREW 1 1/4-12	4
9	2800148	WASHER FLAT 1 1/4	4
8	8100503-10	DAISY SMART BOX, 10' CABLE	1
7	8100506-05	SMART BOX-4S AIR 5' CABLE	2
6	8100501-35	SMART BOX-4S L/C 35' CABLE	2
5	8100500-20	METER TO SMART BOX 20' CABLE	1
4	8100152-20	POWER 23' CABLE	1
3	8509150-01	METER 9150 DIGITAL	1
2	8100026-02	9150 4 WAY SMART BOX	1
1	8300865-13R	LOAD CELL 22.6 BOLT ON	2

SI
ON-BOARD
WEIGHING
A VPG Brand

PROPRIETARY AND CONFIDENTIAL
THE INFORMATION CONTAINED IN THIS DRAWING IS THE SOLE PROPERTY OF VPG SI ONBOARD. ANY REPRODUCTION IN PART OR AS A WHOLE WITHOUT THE WRITTEN PERMISSION OF VPG SI ONBOARD IS PROHIBITED.

UNLESS OTHERWISE SPECIFIED:	DRAWN BY: CON	7/10/13	TITLE:
DIMENSIONS ARE IN INCHES	CHECKED		SYS SUPER B 9150 HOL / AIR
TOLERANCES:	MECH		
.X ±.03	ELEC		
.XX ±.01	MFG		
.XXX ±.005	PROD		
ANGLES ±0°30'	G.A.		
INTERPRET GEOMETRIC TOLERANCING PER: ASME Y14.5M-1994	MATERIAL		
FINISH	APPLICATION	USED ON	
DO NOT SCALE DRAWING			

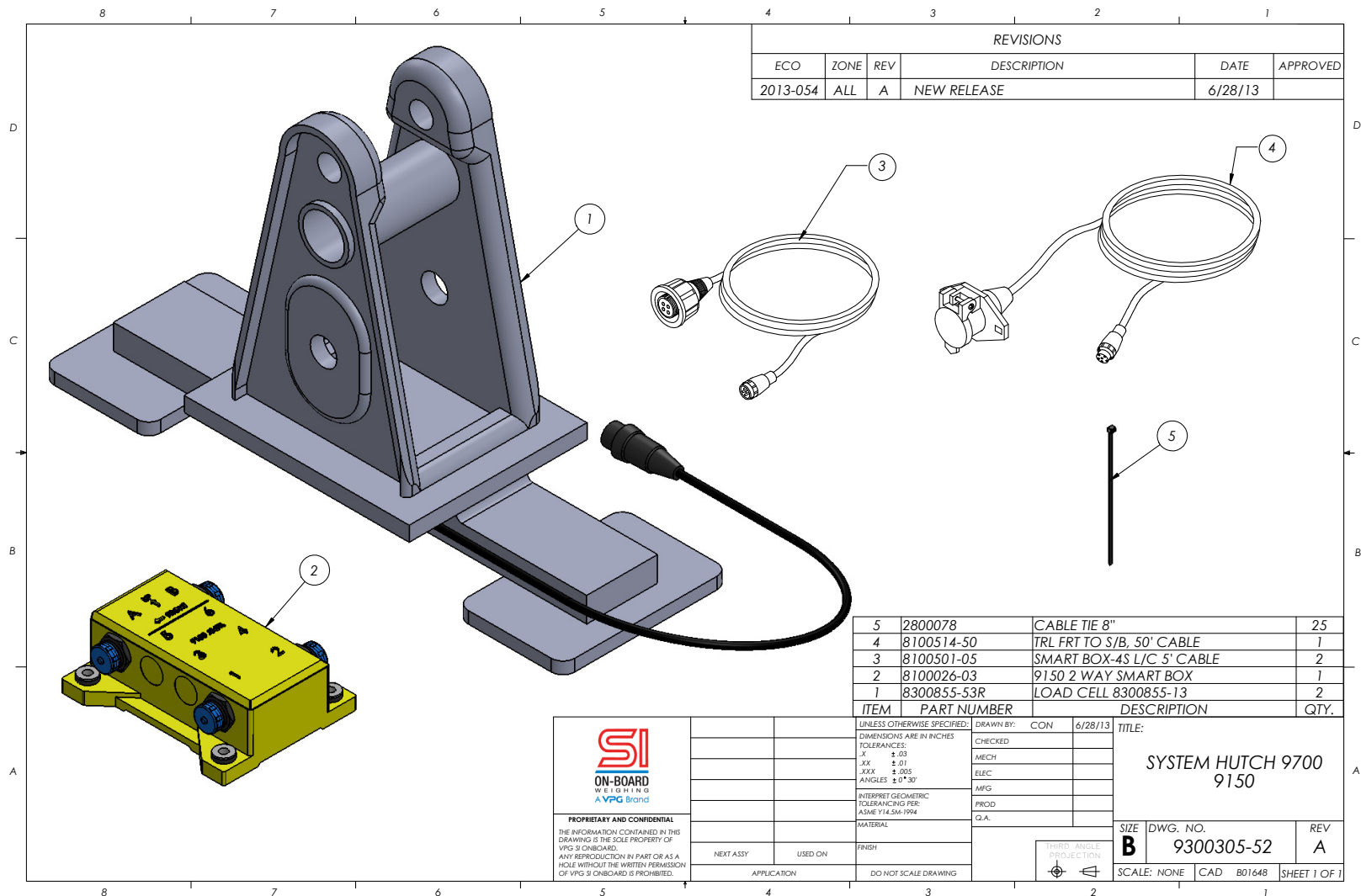
SIZE	DWG. NO.	REV
B	9102335-50	A
SCALE: NONE	CAD: B01653	SHEET 1 OF 1

5920 South 194th Street | Kent, WA 98032 | USA
 Sales Support: 800-638-5111 | Technical Support: 626-202-5047
 E-mail: Obw.usa@vpgsensors.com

sionboard.com



9150 Hutch 9700 Center Hanger System- 9300305-52

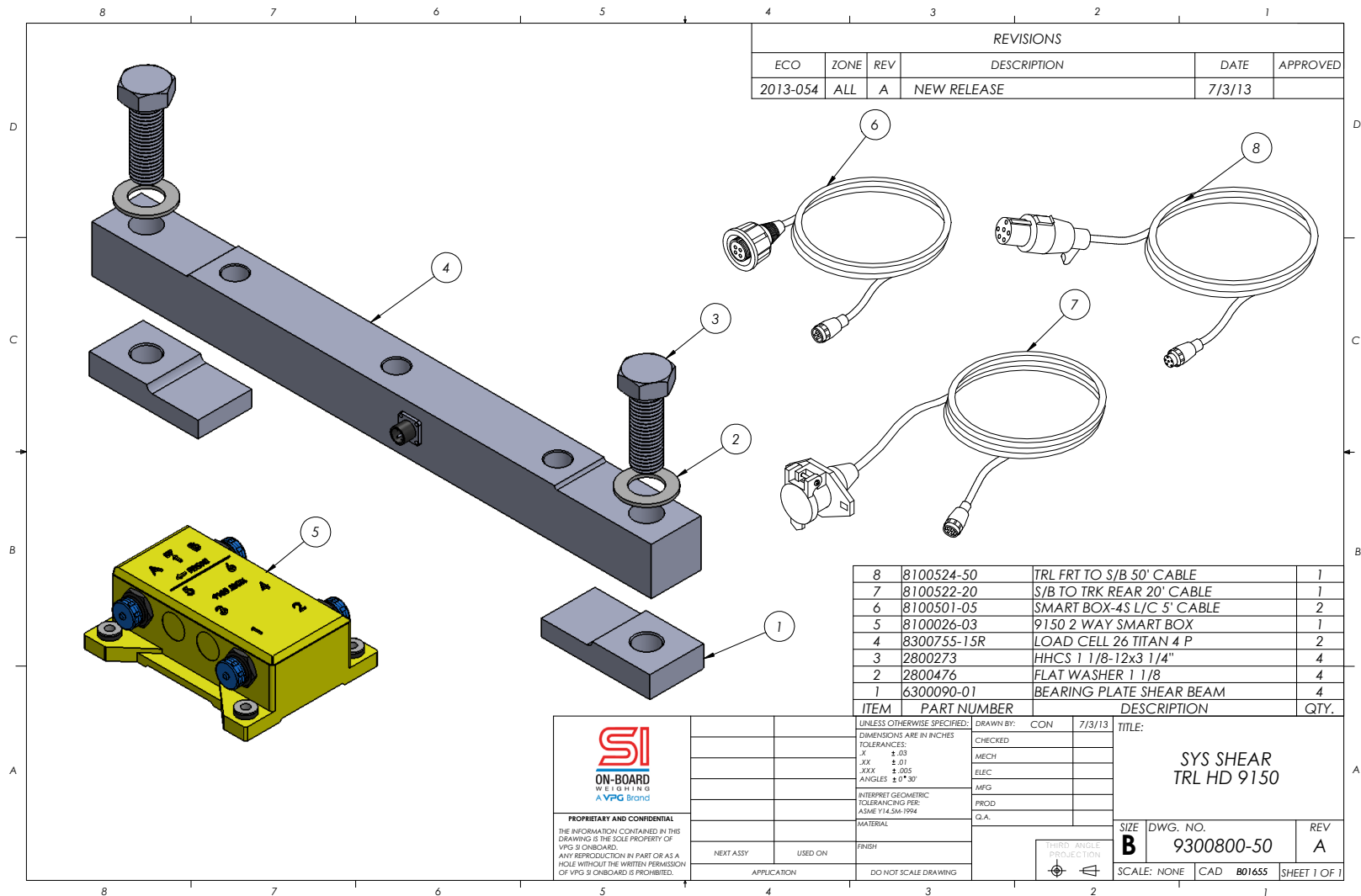


5920 South 194th Street | Kent, WA 98032 | USA
 Sales Support: 800-638-5111 | Technical Support: 626-202-5047
 E-mail: Obw.usa@vpgsensors.com

sionboard.com



9150 Shear Beam Trailer Heavy Duty System- 9300800-50

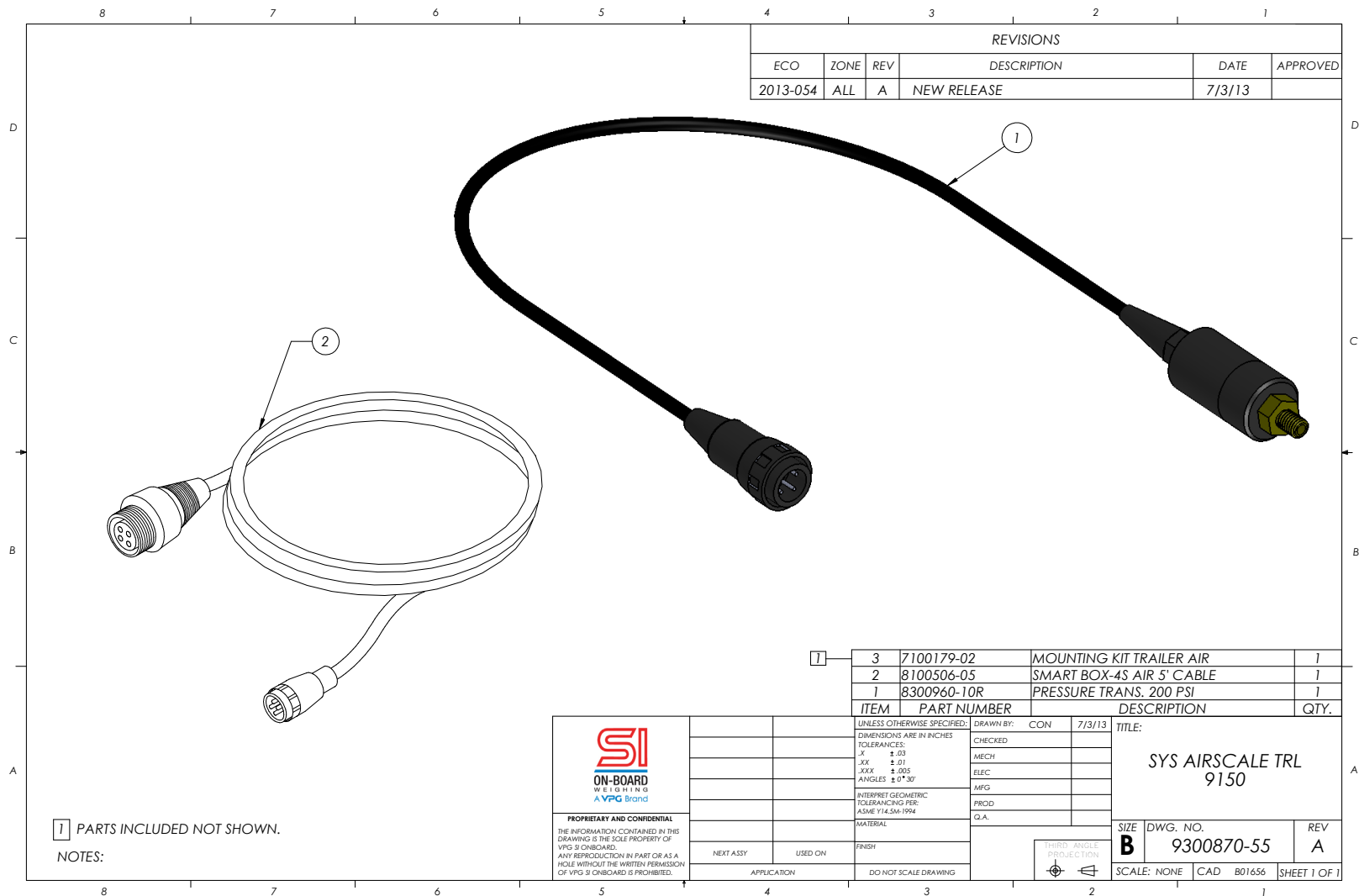


5920 South 194th Street | Kent, WA 98032 | USA
 Sales Support: 800-638-5111 | Technical Support: 626-202-5047
 E-mail: Obw.usa@vpgsensors.com

sionboard.com



9150 Trailer Air Scale System - 9300870-55



REVISIONS					
ECO	ZONE	REV	DESCRIPTION	DATE	APPROVED
2013-054	ALL	A	NEW RELEASE	7/3/13	

ITEM	PART NUMBER	DESCRIPTION	QTY.
3	7100179-02	MOUNTING KIT TRAILER AIR	1
2	8100506-05	SMART BOX-4S AIR 5' CABLE	1
1	8300960-10R	PRESSURE TRANS. 200 PSI	1

	UNLESS OTHERWISE SPECIFIED:	DRAWN BY:	CON	7/3/13	TITLE:
	DIMENSIONS ARE IN INCHES	CHECKED			SYS AIRSCALE TRL 9150
	TOLERANCES:	MECH			
	.X ± .03	ELEC			
.XX ± .01	MFG				
.XXX ± .005	PROD				
ANGLES ± 0°.30'	G.A.				
INTERPRET GEOMETRIC TOLERANCING PER: ASME Y14.5M-1994	MATERIAL				
PROPRIETARY AND CONFIDENTIAL	FINISH				
THE INFORMATION CONTAINED IN THIS DRAWING IS THE SOLE PROPERTY OF VPG SENSORS.	APPLICATION				
ANY REPRODUCTION IN PART OR AS A WHOLE WITHOUT THE WRITTEN PERMISSION OF VPG SENSORS IS PROHIBITED.	DO NOT SCALE DRAWING				

1 PARTS INCLUDED NOT SHOWN.
NOTES:

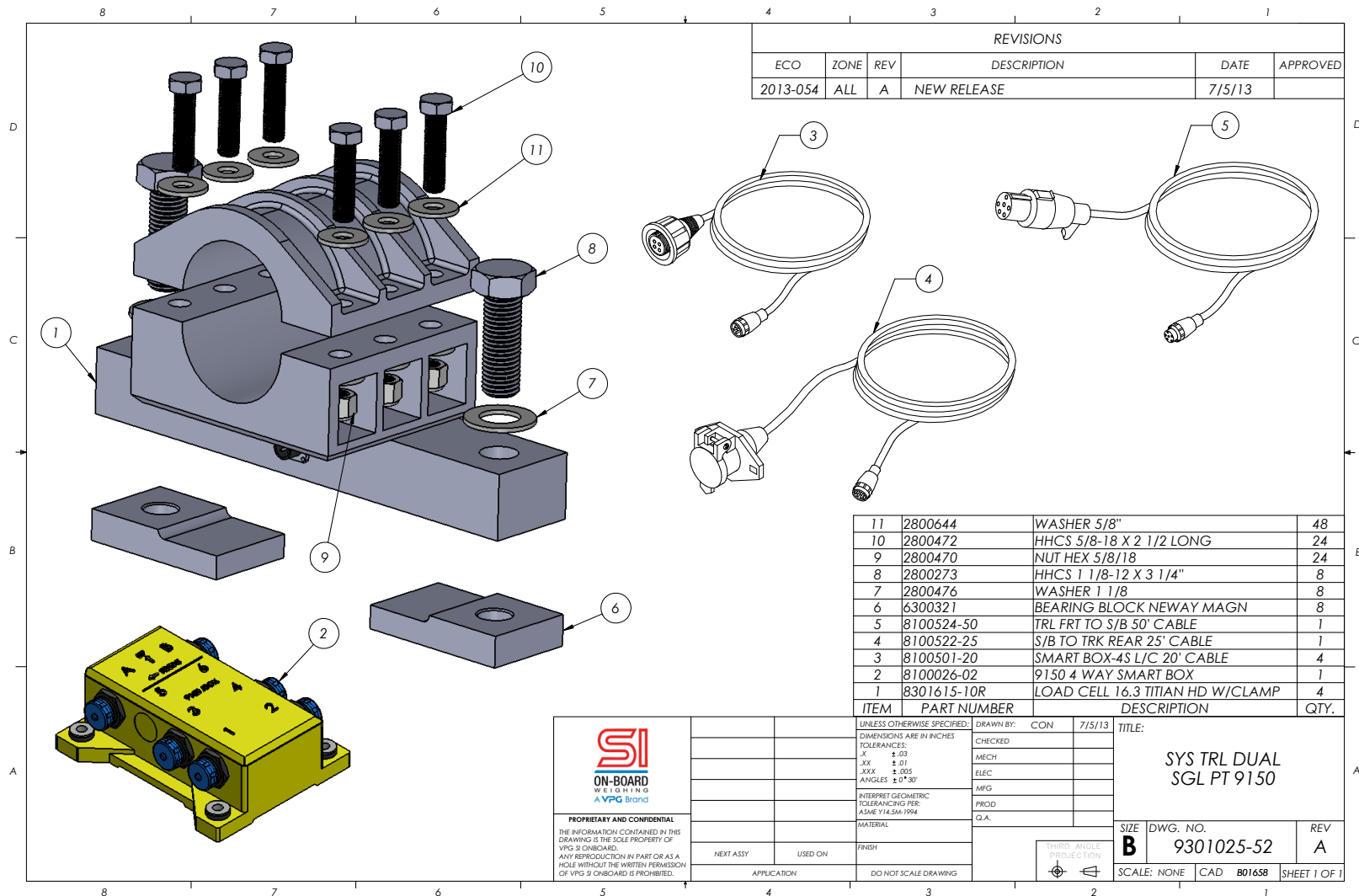
SIZE	DWG. NO.	REV
B	9300870-55	A
SCALE: NONE	CAD B01656	SHEET 1 OF 1

5920 South 194th Street | Kent, WA 98032 | USA
 Sales Support: 800-638-5111 | Technical Support: 626-202-5047
 E-mail: Obw.usa@vpgsensors.com

sionboard.com



9150 Trailer Dual Single Point System - 9301025-52

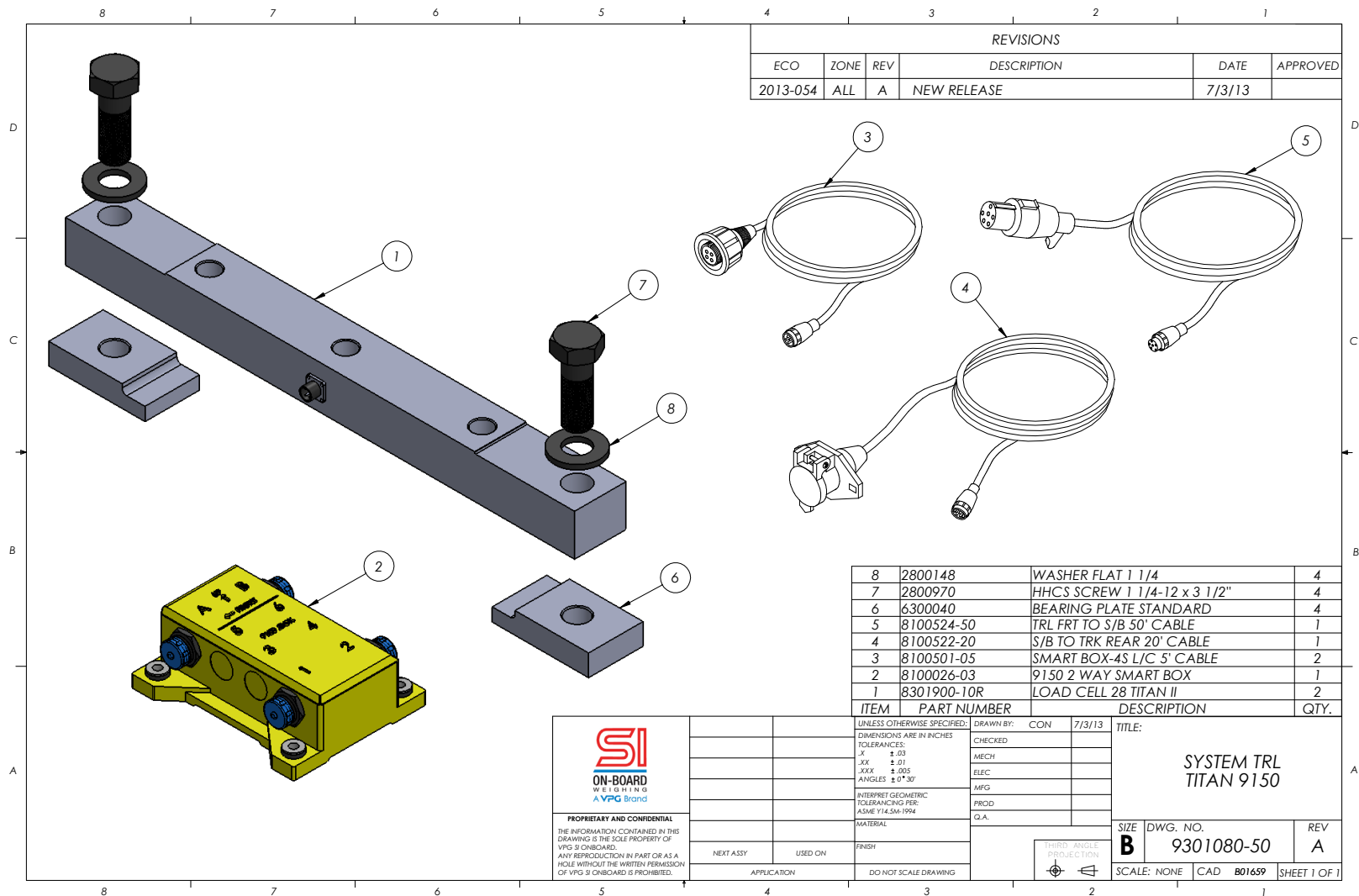


5920 South 194th Street | Kent, WA 98032 | USA
 Sales Support: 800-638-5111 | Technical Support: 626-202-5047
 E-mail: Obw.usa@vpgsensors.com

sionboard.com



9150 Titan Trailer System - 9301080-50

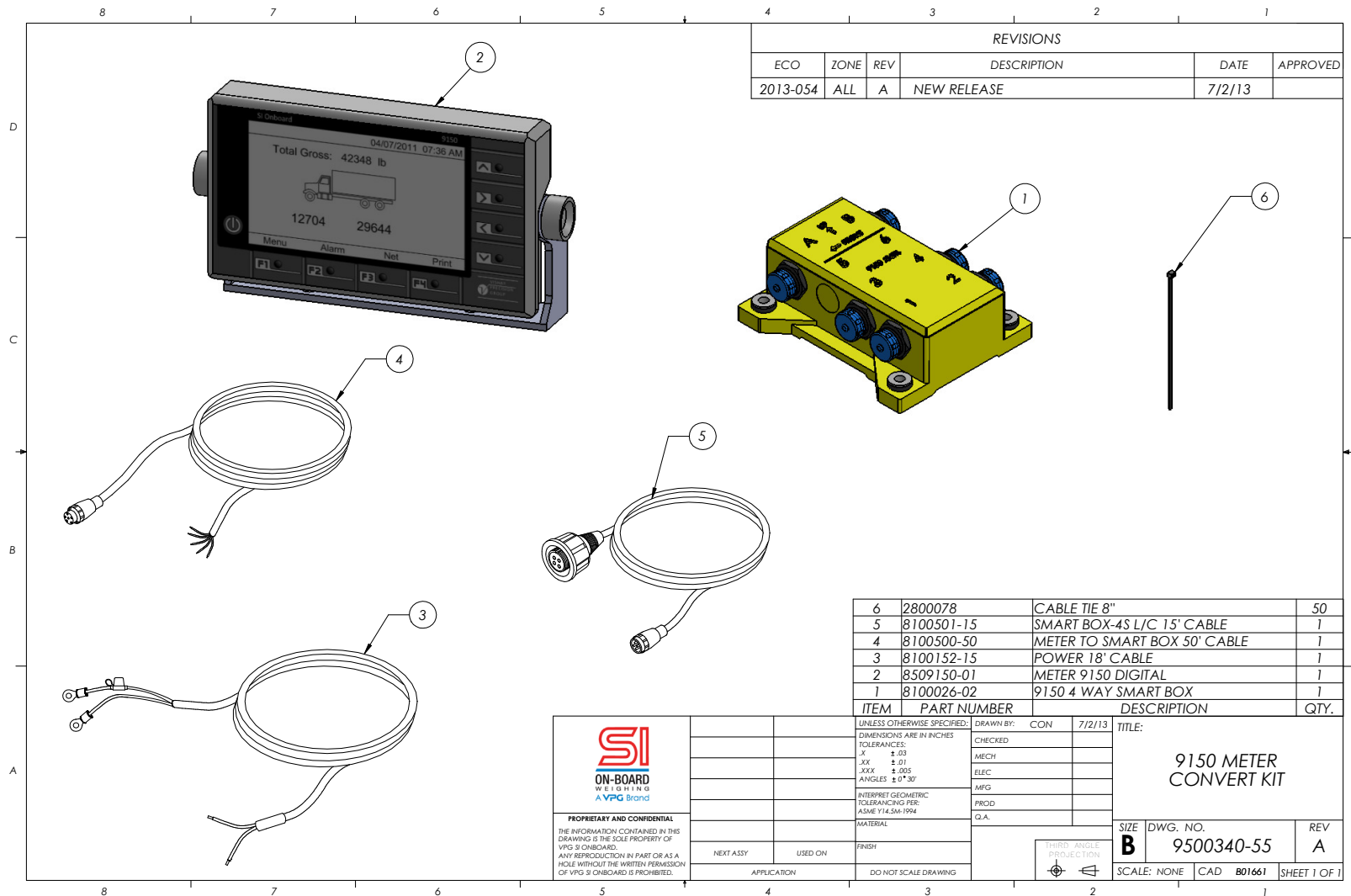


5920 South 194th Street | Kent, WA 98032 | USA
 Sales Support: 800-638-5111 | Technical Support: 626-202-5047
 E-mail: Obw.usa@vpgsensors.com

sionboard.com



9150 Meter Converter Kit - 9300340-55



REVISIONS					
ECO	ZONE	REV	DESCRIPTION	DATE	APPROVED
2013-054	ALL	A	NEW RELEASE	7/2/13	

ITEM	PART NUMBER	DESCRIPTION	QTY.
6	2800078	CABLE TIE 8"	50
5	8100501-15	SMART BOX-4S L/C 15' CABLE	1
4	8100500-50	METER TO SMART BOX 50' CABLE	1
3	8100152-15	POWER 18' CABLE	1
2	8509150-01	METER 9150 DIGITAL	1
1	8100026-02	9150 4 WAY SMART BOX	1

SI
ON-BOARD
WEIGHING
A VPG Brand

PROPRIETARY AND CONFIDENTIAL
THE INFORMATION CONTAINED IN THIS DRAWING IS THE SOLE PROPERTY OF VPS SI ONBOARD. ANY REPRODUCTION IN PART OR AS A WHOLE WITHOUT THE WRITTEN PERMISSION OF VPS SI ONBOARD IS PROHIBITED.

UNLESS OTHERWISE SPECIFIED:	DRAWN BY: CON	7/2/13	TITLE:
DIMENSIONS ARE IN INCHES	CHECKED		9150 METER CONVERT KIT
TOLERANCES:	MECH		
.X ± .03	ELEC		
.XX ± .01	MFG		
.XXX ± .005	PROD		
ANGLES ± 0°30'	G.A.		
INTERPRET GEOMETRIC TOLERANCING PER: ASME Y14.5M-1994	FINISH		
MATERIAL	APPLICATION	USED ON	
	DO NOT SCALE DRAWING		

SIZE **B** DWG. NO. **9500340-55** REV **A**

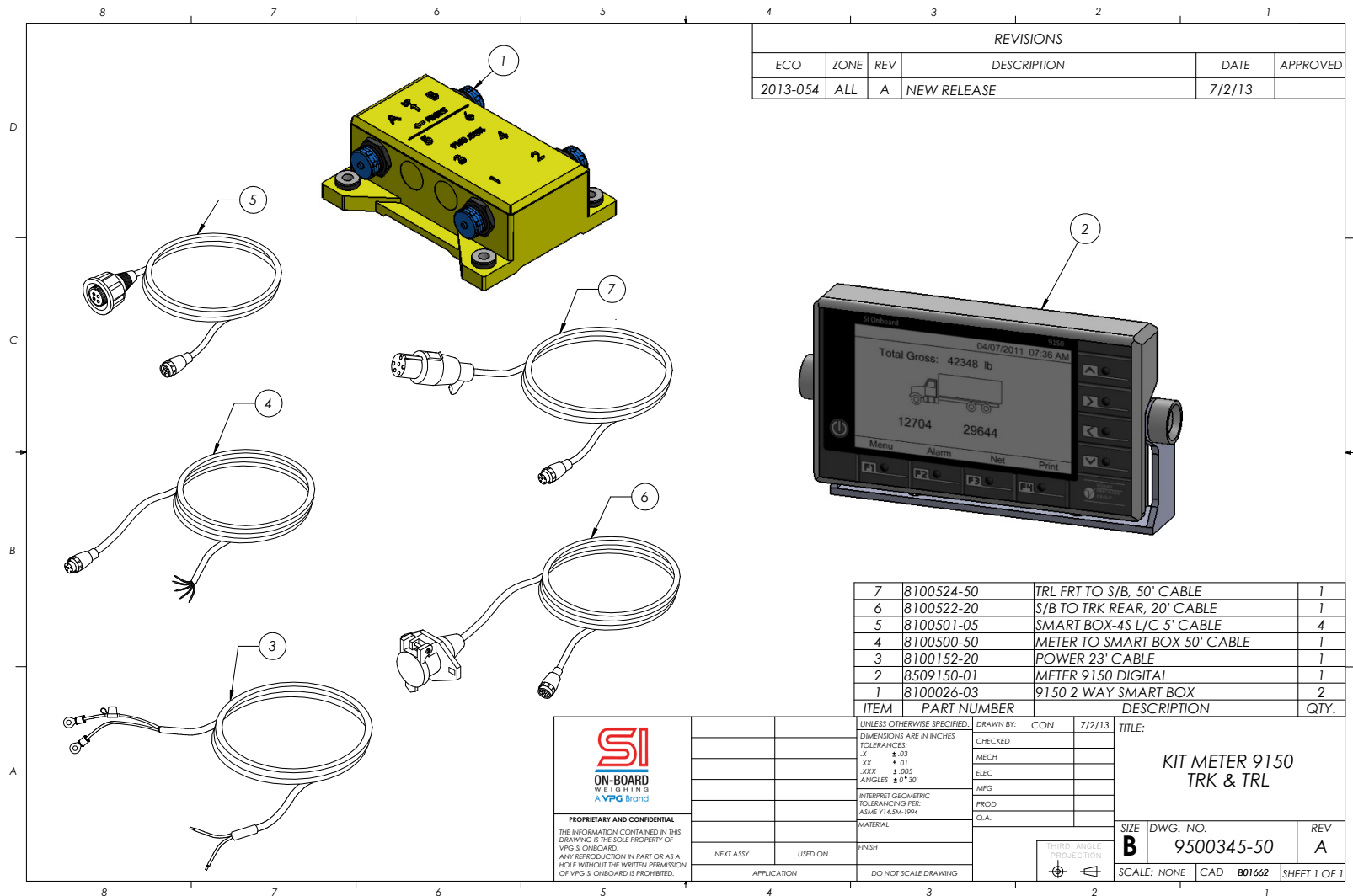
SCALE: NONE CAD **B01661** SHEET 1 OF 1

5920 South 194th Street | Kent, WA 98032 | USA
 Sales Support: 800-638-5111 | Technical Support: 626-202-5047
 E-mail: Obw.usa@vpgsensors.com

sionboard.com



9150 Meter Kit, Truck and Trailer - 9500345-50



REVISIONS					
ECO	ZONE	REV	DESCRIPTION	DATE	APPROVED
2013-054	ALL	A	NEW RELEASE	7/2/13	

ITEM	PART NUMBER	DESCRIPTION	QTY.
7	8100524-50	TRL FRT TO S/B, 50' CABLE	1
6	8100522-20	S/B TO TRK REAR, 20' CABLE	1
5	8100501-05	SMART BOX-4S L/C 5' CABLE	4
4	8100500-50	METER TO SMART BOX 50' CABLE	1
3	8100152-20	POWER 23' CABLE	1
2	8509150-01	METER 9150 DIGITAL	1
1	8100026-03	9150 2 WAY SMART BOX	2

SI
ON-BOARD
WEIGHING
A VPG Brand

PROPRIETARY AND CONFIDENTIAL
THE INFORMATION CONTAINED IN THIS DRAWING IS THE SOLE PROPERTY OF VPG SI ONBOARD. ANY REPRODUCTION IN PART OR AS A WHOLE WITHOUT THE WRITTEN PERMISSION OF VPG SI ONBOARD IS PROHIBITED.

UNLESS OTHERWISE SPECIFIED:	DRAWN BY: CON	7/2/13	TITLE:						
DIMENSIONS ARE IN INCHES	CHECKED		KIT METER 9150 TRK & TRL						
TOLERANCES:	MECH								
.X ± .03	ELEC								
.XX ± .01	MFG								
.XXX ± .005	PROD								
ANGLES ± 0°.30'	G.A.								
INTERPRET GEOMETRIC TOLERANCING PER: ASME Y14.5M-1994	FINISH		<table border="1" style="font-size: x-small;"> <tr> <td>SIZE</td> <td>DWG. NO.</td> <td>REV</td> </tr> <tr> <td>B</td> <td>9500345-50</td> <td>A</td> </tr> </table>	SIZE	DWG. NO.	REV	B	9500345-50	A
SIZE	DWG. NO.	REV							
B	9500345-50	A							
MATERIAL	APPLICATION	USED ON	<table border="1" style="font-size: x-small;"> <tr> <td>SCALE: NONE</td> <td>CAD: B01662</td> <td>SHEET 1 OF 1</td> </tr> </table>	SCALE: NONE	CAD: B01662	SHEET 1 OF 1			
SCALE: NONE	CAD: B01662	SHEET 1 OF 1							
DO NOT SCALE DRAWING									

5920 South 194th Street | Kent, WA 98032 | USA
 Sales Support: 800-638-5111 | Technical Support: 626-202-5047
 E-mail: Obw.usa@vpgsensors.com

sionboard.com

